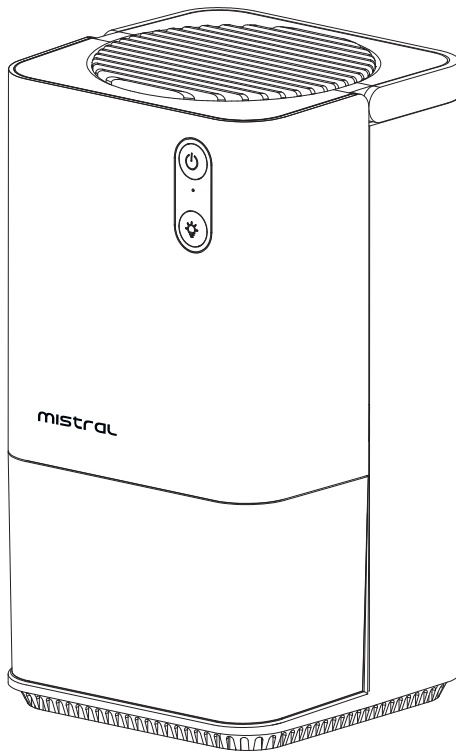


mistral

Dehumidifier MDH012



DEHUMIDIFIER WITH AC ADAPTER

Please read this instruction manual thoroughly before operating and keep it for future reference

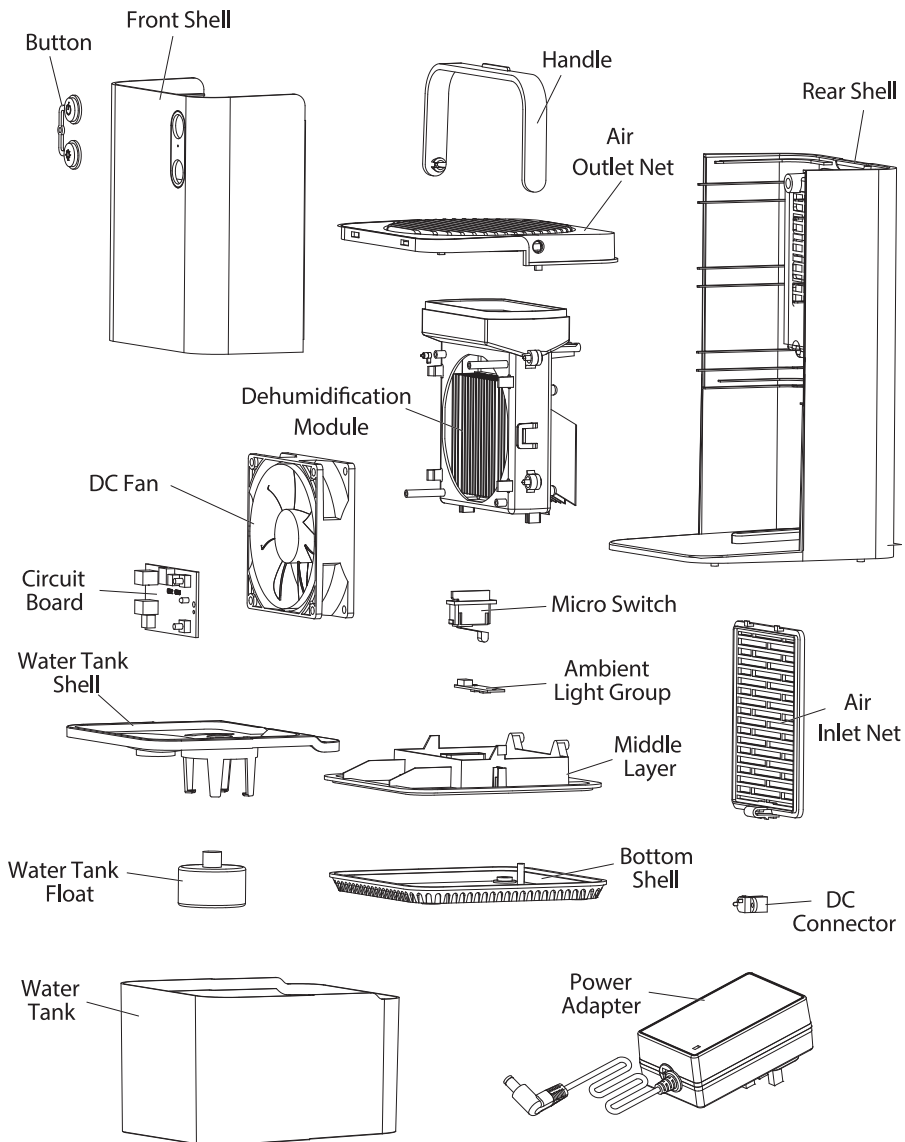
IMPORTANT SAFETY INSTRUCTIONS

- This appliance is not intended for use by persons (including children) with reduced physical, sensory or mental capabilities, or lack of experience and knowledge unless they have been given supervision or instruction concerning the use of the appliance by a person responsible for their safety.
- Children should be supervised to ensure that they do not play with the appliance.
- Do not operate any appliance with a damaged cord or plug or after the appliance malfunctions, or has been dropped or damaged in any manner. If the power cord is damaged, it must be replaced by the Service Centre to avoid a hazard.
- When using electrical appliances, basic safety precautions should always be followed to reduce the risk of fire, electric shock, and/or injury.
- Do not immerse appliance, cord or plug in water or other liquid.
- Unplug from the outlet when not in use and before cleaning.
- Do not unplug the appliance by pulling on the cord.
- Use the accessories from the appliance only, as other accessories not from the appliance may cause fire, electric shock or injury.
- The appliance is used indoors excluding laundry rooms.
- The appliance is only to be used with the power supply provided with the appliance.
- The power supply voltage must conform to the power supply voltage 100-240V~, specified by the machine, otherwise, the machine will be damaged.
- Do not use this appliance in an environment with high temperature and oily, flammable and explosive gas.
- Do not disassemble the appliance.
- Do not use metal appliances or conductive objects to penetrate the appliance body.
- Do not touch any part of the appliance when in use, if you need to pull out the power plug, please turn off the power first and then pull out the power plug.
- Do not dismantle or reform this appliance, the company will not be responsible for all consequences caused by dismantling or reforming the appliance by yourself.
- Make sure that the water tank is installed in place before starting the appliance. Do not use the appliance without the water tank. The accumulated water will spill on the ground or other places and cause damage.
- The ambient temperature is too low, if it is lower than 15°, the condensate of the dehumidifier will freeze and frost. At this time, just shut down and stop working, and the appliance will not be affected. Generally, dehumidification is not required in low temperature environment.

PRODUCT TECHNICAL PARAMETERS

MODEL	RATED VOLTAGE	RATED POWER	GROSS CAPACITY
MDH012	9V~50-60Hz	33W	1.2L

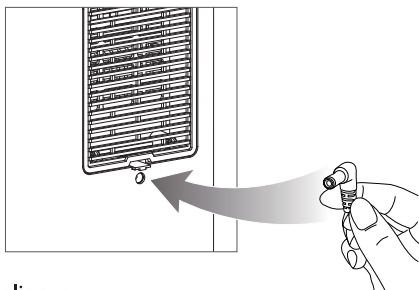
INTRODUCTION OF PARTS



CONTROLS AND OPERATIONS

Power

- Connect one end of the power cord to the interface on the back of the appliance, and the other end to the power socket, and the appliance will enter a standby state.
- While in standby mode, press the power button switch, when the appliance starts, the power light indicator will switch on.
- Press the power button again to power off the appliance.

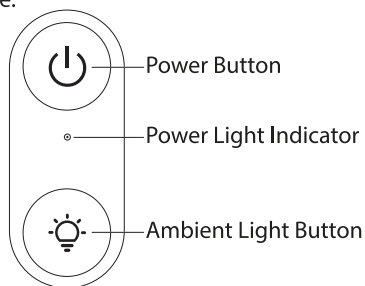


Ambient Light

- While the appliance is switch on, press the ambient light button to cycle through the "fixed-color-off-gradual change" mode.

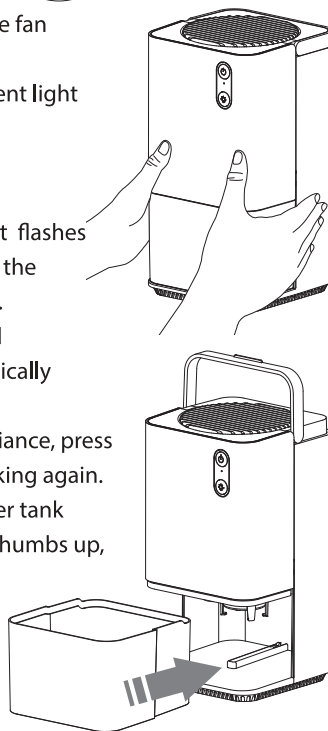
Note:

- In the working state of the appliance, pressing the ambient light button does not affect the operation of the fan and dehumidification module.
- In the standby state of the appliance, pressing the ambient light button is invalid.



Water Tank

- When the appliance stops working, the atmosphere light flashes red and the indicator light flashes white, indicating that the water tank is full and needs to be taken out and cleaned.
- When the water tank is taken out, the indicator light and atmosphere light are off, and the appliance will automatically shut down.
- When the empty water tank is placed back into the appliance, press the power button again before the appliance starts working again.
- To remove the water tank, hold the two sides of the water tank firmly with both hands, press the upper shell with your thumbs up, and lift the water tank out with gentle force.
- After the stagnant water has been cleaned up, the middle card position at the bottom of the water tank is aligned with the card slot of the fuselage and pushed the water tank inward back into the appliance.



CLEANING AND MAINTENANCE

Clean the dehumidifier periodically

- Clean the filter of the dehumidifier to improve its efficiency as well as maintain healthy indoor air quality.
- Before cleaning and maintaining the dehumidifier, please cut off the power supply.
- Do not rinse the body directly with water. Wipe it lightly with a soft cloth containing a little neutral detergent, and then wipe it dry.
- After cleaning and maintenance, be sure to wait until it is fully dry before it can be powered on or stored.
- When not in use for a long time, please unplug the power cord. It is recommended to wrap it in the original packaging and store it in a dry place.

Filter

- Recommended to clean the filter once a month
- Wash the filter with water, or use a vacuum cleaner or a dry brush to clean the filter.

Maintain dehumidifier well when not in use

- Keep the dehumidifier well when not use. Cover the dehumidifier to prevent it from sun radiation, rain, dust accumulation, for easy use in the future.

TROUBLESHOOTING

If the dehumidifier is operating well:

- There is air at the inlet and outlet of the dehumidifier, the air temperature at the outlet should be higher than the inlet air temperature;
- Remove the filter, touch the bottom of the evaporator, its temperature is lower than the ambient temperature;
- There is water accumulated in the bucket after the dehumidifier has been running for some time.

If all of the above are in order, the dehumidifier is in good operating condition.

If not, kindly refer to the below:

Problem	Cause of Issue	Solution
The appliance does not work.	The plug is not plugged in correctly.	Check and plug in the power plug correctly.
	The power button switch is not switched on.	Press the power button again to switch it on.
	The circuit board is damaged.	The circuit board needs to be replaced.
The appliance is making abnormal noises.	The fan blade is cracked.	The fan blade needs to be replaced.
	There is a foreign object within the appliance.	Check the fan with the power switched off and unplugged to remove the object.
	The motor is damaged.	The motor needs to be replaced.
The appliance is not dehumidifying.	The motor is damaged.	The motor needs to be replaced.
	The dehumidification module is damaged.	The dehumidification module needs to be replaced.
	The condensate is frozen.	The ambient temperature is below 15°.
The appliance ambient light does not work	The ambient light is damaged.	The ambient light needs to be replaced.



Disposal

The product must not be disposed of via normal household waste after its service life, but must be taken to a collection station for recycling of electrical and electronic devices. The symbol on the product, the operating instructions or the packaging indicates such disposal procedures. The materials recyclable in accordance with their respective symbol. By means of re-use, material recycling or any other form of recycling old appliances, you are making an important contribution to the protection of our environment.



Keep the original packaging in a safe place so that you may use it in the event that transportation or shipping of the product becomes necessary.

Warranty & Customer Service

SCAN FOR



e-Warranty

e-Warranty Registration at www.mayer.sg

MAYER MARKETING PTE LTD

Customer Service Hotline: 6542-8383 (Mon - Fri 9:00am to 5:00 pm)

Service Centre Operating Hours:

Mon - Fri: 9:00am to 5:00pm

Sat: 9:00am to 12:00pm

Closed on Sunday & Public Holidays

71 Ubi Crescent, #06-02, Excalibur Centre, Singapore 408571.

For more information on warranty policy, please visit:

<https://mayer.sg/pages/warranty-return-and-exchange-policy>