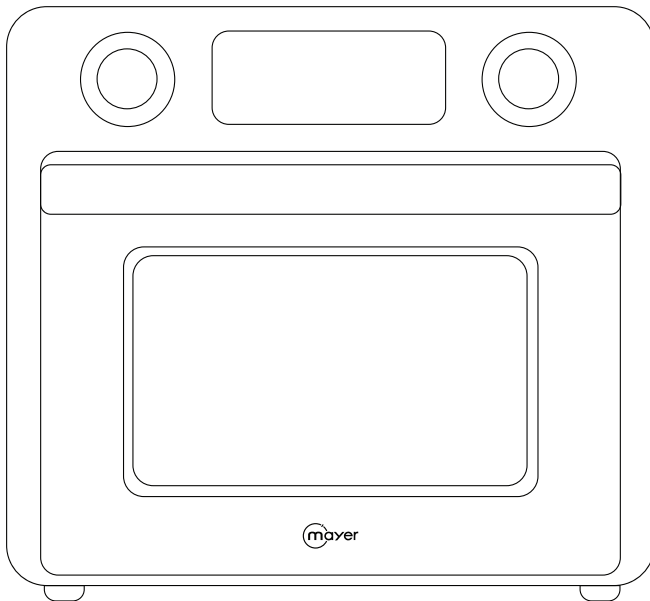




Digital Oven

MMA040D



ELECTRIC OVEN

Please read this instruction manual thoroughly before operating and keep it for future reference

IMPORTANT SAFETY INSTRUCTIONS

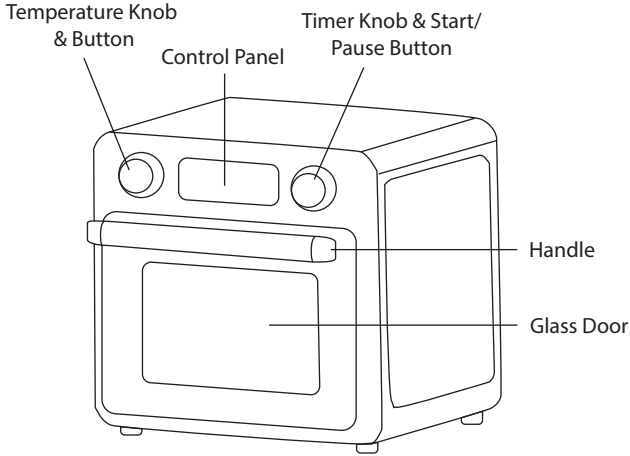
- This appliance is not intended for use by persons (including children) with reduced physical, sensory or mental capabilities, or lack of experience and knowledge unless they have been given supervision or instruction concerning the use of the appliance by a person responsible for their safety.
- Children should be supervised to ensure that they do not play with the appliance.
- Do not operate any appliance with a damaged cord or plug or after the appliance malfunctions, or has been dropped or damaged in any manner. If the supply cord is damaged, it must be replaced by the Service Centre to avoid a hazard.
- When using electrical appliances, basic safety precautions should always be followed to reduce the risk of fire, electric shock, and/or injury.
- Do not immerse appliance, cord or plug in water or other liquid.
- Unplug from the outlet when not in use and before cleaning.
- Do not unplug the appliance by pulling on the cord.
- Use the accessories from the appliance only, as other accessories not from the appliance may cause fire, electric shock or injury.
- Do not touch hot surfaces. Always use handles or knobs.
- Do not let the cord hang over the edge of the table or counter, or touch hot surfaces.
- Do not place on or near a hot gas or electric burner.
- When operating the oven, keep at least 10cm of free space on all sides of the oven to allow for adequate air circulation. A fire may occur if the oven is covered or touching flammable material, including the curtain, draperies, walls, and the like, when in operation. Do not store any item on top of the appliance when in operation.
- Allow the appliance to cool before putting on or taking off parts, and before cleaning.
- To disconnect, turn the appliance OFF, then remove the plug.
- Use extreme caution when moving or removing accessories, or disposing of hot grease, hot oil, or other hot liquids.
- Do not cover the accessories or any part of the oven with aluminium foil. This may cause the oven to overheat.
- Do not clean the inside of the oven with abrasive sponge or metal scouring pads, pieces can break off the pad and touch electrical parts, creating a risk of electric shock.
- Oversized foods or metal utensils must not be inserted in the appliance as they may create a fire or risk of electric risk.
- Extreme cautions should be exercised when using cooking or baking containers constructed of anything other than metal or ovenproof glass.
- Be sure that nothing touches the top or bottom elements of the oven.
- Do not place any of the following materials in the oven: cardboard, plastic, paper, or anything similar.

- Always wear protective, insulated oven gloves when inserting or removing items from the hot oven.
- This appliance has a tempered, safety glass door. The glass is stronger than ordinary glass and more resistant to breakage. Tempered glass can still break around the edges. Avoid scratching the door surface or nicking edges.
- Do not use the appliance if the glass door is damaged, as the glass may shatter during use.
- For indoor use only.
- Empty the crumb tray after each use.
- When positioning the wire rack, mesh basket tray, or rotisserie, place the baking tray under them to catch cooking juices and fats.

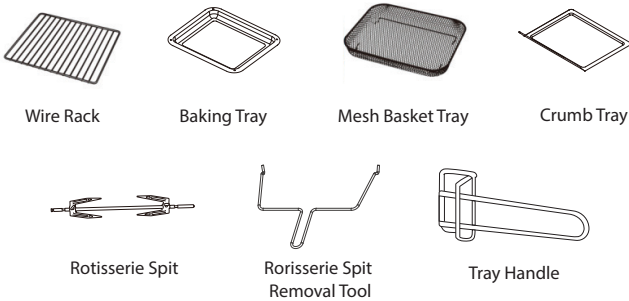
PRODUCT TECHNICAL PARAMETERS

MODEL	RATED VOLTAGE	RATED POWER	GROSS CAPACITY
MMAO40D	220-240V~, 50-60Hz	1600-1850W	40L

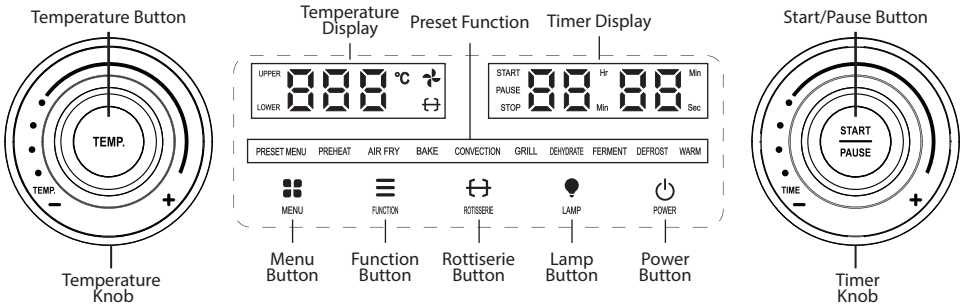
INTRODUCTION OF PARTS



Accessories



Control Panel



CONTROLS AND OPERATIONS

Before first use

- Make sure that the appliance is unplugged.
- Wash all accessories in hot, soapy water.
- Thoroughly dry all accessories and re-assemble them in the appliance before plugging the appliance into the power outlet.
- If the appliance is used for the first time, we recommend that you run the oven (without any food or accessories in it) at the highest temperature (230°C) on the toast function for about 15 minutes, it may slightly emit smell and smoke. This is normal and only last for a short time.
- Make sure to use the appliance in a well-ventilated area.

Before operating the appliance

1. Place food ingredients onto accessories that will be used for cooking.
2. Place accessories and food ingredients into the appliance.
3. Plug the appliance into outlet and turn on main switch. When the power is turned on, the control panel and all indicator lights will flash once, and only "POWER" button will light up on the control panel thereafter.
4. Proceed to operating the appliance.

Operating the appliance

1. Press the "POWER" button to switch on the appliance. At this point of time, the icons on the control panel will be lighted up, enter into standby mode.
2. Selecting preset menus or cooking functions.


Preset menu

- This appliance comes with 18 preset menus. For cooking time and temperature information for the individual functions, please refer to the table below.
 1. Press the "MENU" button and the "PRESET MENU" indicator will light up.
 2. Choose the desired menu by turning either "Temperature Knob" or "Timer Knob", the LED display will show the selected menu code with default time.
 3. After selecting the preset menu, the LED display will show the selected menu code with default time, and the temperature cannot be adjusted.
 4. To adjust cooking time, press the "START/PAUSE" button and the timer display will flash.
 5. Turn the "Timer Knob" to adjust to your desired cooking time.
 6. Once the timer is set, press the "START/PAUSE" button to start the cooking.
 7. When the cooking time is completed, the appliance will make 3 beep sounds and the display will show "End". The appliance will take about 1 minute to cool off and then turn off by itself.

8. If you need to pause the cooking at any point of time, press the “START/PAUSE” button once, and the timer will pause. Press the “START/PAUSE” button again to resume cooking.
9. To stop or cancel the appliance from operating or cooking, press “POWER” button. There will be a beep sound and the appliance will stop operating.

Preset Menu	Function	Default Time	Time Range	Time Range	Upper & Lower Heating Temp. (°C)	Spiral Coil Temp. (°C)	Fan Speed
P01	Wings	25 min	1-90 min	Rotate Slowly: 1 Rotate Quickly: 5	-	200	High
P02	Chicken	40 min			-	200	Low
P03	Fish	25 min			200	-	Low
P04	Steak	15 min			180	-	-
P05	Sweet Potato	50 min			200	-	Low
P06	Corn	22 min			180	-	Low
P07	Chestnut	25 min			180	-	Low
P08	Fries	20 min			-	200	high
P09	Tofu	20 min			175	-	high
P10	Egg Tart	18 min			180	-	-
P11	Cookie	25 min			180	-	Low
P12	Chiffon Cake	35 min			150	-	-
P13	Toast	10 min			180	-	-
P14	Baby Melts	1 hour			100	-	-
P15	Pizza	17 min			200	-	-
P16	Dry Fruit	8 hour	1-18 hours	30	60	-	Low
P17	Jerky	4 hour			80	-	Low
P18	Yogurt	10 hour			45	-	-

Cooking function

- This appliance comes with 9 cooking functions. For cooking time and temperature information for the individual functions, please refer to the table below.
 1. Press the "FUNCTION" button or turn the knobs, to choose your desired cooking function and the selected function will start flashing on the LED display. The LED display will show the default temperature with default time.
 2. Press either "TEMP." or "START/PAUSE" button to confirm the function.
 3. Turn the "Temperature" knob to adjust the temperature and turn the "Timer" knob to adjust to your desired time.
 4. Once the temperature and timer are set, press the "START/PAUSE" button to start the cooking.
 5. The appliance will start pre-heating for some of the functions (refer to the table below). The selected function will light up and the "PREHEAT" indicator will flashing. While pre-heating, the temperature display would indicate  until the set temperature is achieved.
 6. When the appliance reaches the set temperature, the "PREHEAT" indicator will switch off and the indicator of the selected cooking function will remain light up, the timer will then start the countdown till the cooking is finished.
 7. When the cooking time is completed, the appliance will make 3 beep sounds and the display will show "End". The appliance will take about 1 minute to cool off and then turn off by itself.
 8. If you need to pause the cooking at any point of time, press the "START/PAUSE" button once, and the timer will pause. Press the "START/PAUSE" button again to resume cooking.
 9. To stop or cancel the appliance from operating or cooking, press "POWER" button. There will be a beep sound and the appliance will stop operating.

Note:

- Keep the air oven door securely closed throughout the cooking process to prevent potential accidents and ensure optimal cooking conditions.
- If you need to open the door to check your food at any point, press the "START/PAUSE" button once to pause the cooking.
- If needed, lightly spray the food with oil or cooking spray so they do not stick to the baking tray or mesh basket tray.
- Place food on the wire rack, mesh basket tray or baking tray.
When positioning the wire rack, mesh basket tray, or rotisserie, place the baking tray under them to catch cooking juices and fats.

Function	Default Time	Time Range	Time interval (min)	Default Upper Heating Temp. (°C)	Default Lower Heating Temp. (°C)	Spiral coil heating element (°C)	Temp. Range (°C)	Upper & Lower Individual Temp. Control	Fan Speed	Auto Preheat
Preheat	Auto (2-4 min)	-	-	180	180	-	100-230	-	Low	-
Air Fry	20 min	1-90 min	Rotate Slowly: 1	-	-	220	80-230		High	Yes
Bake	40 min	1-120 min	Rotate Quickly: 5	200	180	-	60-230	Up to 40°C Difference	-	Yes
Convection	30 min	1-90 min	30	180	180	-	80-230		Low	Yes
Grill	30 min	1-90 min		185	185	-	80-230		-	Yes
Dehydrate	8 hours	1-18 hours		60	60	-	40-100		Low	-
Ferment	6 hours	1-18 hours		-	40	-	30-50		-	-
Defrost	3 hours	1-6 hours		-	50	-	40-80		-	-
Keep Warm	6 hours	1-12 hours		-	65	-	40-90		-	-

Rotisserie

1. Insert the first thumbscrew onto the rotisserie spit by pointing inward. Secure the first rotisserie fork with thumbscrew provided.
2. Place the rotisserie spit across the middle of the food ingredient (e.g. whole chicken).
3. Make sure the rotisserie spit is secured and in the middle of the food ingredient before inserting the second rotisserie fork onto the rotisserie spit.
4. Secure the second rotisserie fork with the second thumbscrew.
5. Insert the end-points of the rotisserie spit into the drive socket in the air oven, and rest the other end (square-shape) on the spit support in the air oven.
6. Insert baking tray on a lower shelf position below the food ingredient to catch the cooking juices and fats that may drip when cooking.
7. Select the desired preset menus or cooking functions, please refer to "Operating the appliance".
8. Once press the "START/PAUSE" button to start the cooking, press the "ROTISSERIE" button after that to start the rotisserie function, the rotisserie indicator will light up. The "ROTISSERIE" button can only be selected after the set function has started operating.
9. To cancel the rotisserie function, press the "ROTISSERIE" button again.
10. When finished cooking, to remove the food in the air oven, please lift up the rotisserie spit by using the rotisserie spit removal tool.

Lamp

By default, the air oven light will be turned on for all functions. Press the "LAMP" button to turn on and off the air oven light at any point of time. The light will light up for one minute and will turn off automatically.

Heating elements

- The upper and bottom heating elements will continuously turn on and off to maintain at the set temperature. Thus the heating elements may not be seen lighted up.

Positioning rack

- To accommodate a wide variety of foods the air oven has five rack positions.
- Positioning of the rack will depend on the size of the food and desired browning.
- Before removing the rack, allow some time for the unit to cool down first.
- The oven rack may tilt downward, causing food to shift when the rack is being pulled out. Proceed with caution.

Note:

- For best air frying results, place the mesh basket tray on the top rack position.
- For best broiling results, place the baking tray on the top rack position.
- For best baking results, place the baking tray on the bottom rack position.
- For best toast and pizza results, place the wire rack on the top rack position.

Removing food

- Always open door fully and remove food carefully with tray handle and oven mitts.

CLEANING AND MAINTENANCE

- Clean the appliance after every use and before storage.
- Cleaning of the appliance should only be carried out when the appliance has cooled down to room temperature.
- Turn off the main switch and disconnect the power plug from the main power supply.
- Ensure that the appliance is thoroughly cooled down before cleaning.
- Do not use any steam cleaner to clean this appliance.
- Do not immerse or soak the appliance into the water to clean. Please clean the appliance using a damp cloth.
- Only the given accessories can be soaked, immerse and rinse under water with detergent when washing.
- If accessories are oily, soak them in warm detergent water first before washing.
- To avoid damage to the appliance body, control panel, cavity walls and accessories, do not use any cleaning cloth that contains metal, scrubbing cleaners, steel brush or cloth with a rough surface for cleaning.
- Use a soft sponge or cloth and soaked in gentle detergent to wash the crumb tray and accessories used.
- After every use, clean and dry the appliance body and cavity thoroughly.
- Make sure all the parts are clean and dry thoroughly before storage.
- Mesh basket tray, wire rack, and baking tray are dishwasher safe.
- Do not allow grease and food debris to remain on the appliance door and door seal. If the door seal is not kept clean, the appliance door may fail to close when the appliance is in operation.
- Never store the appliance when it is hot or damp.
- Store the appliance in its box or in a clean and dry place.

TROUBLESHOOTING

Problem	Cause of Issue	Solution
Appliance cannot be turned on.	Plug is not secure in main switch.	Check to ensure the appliance is plugged in securely. If not, remove the plug from the outlet, wait 10 seconds, and plug it in again securely.
	Appliance is not working.	Please contact the Service Centre for repair.
Appliance does not heat.	The door is not closed properly.	Ensure that the door is securely closed, engaging the safety interlock feature. If the door is not properly closed, the appliance will not work.
The ingredients are not evenly cooked.	Certain types of ingredients need to be turned over halfway during the cooking.	Halfway of the cooking time, open the door to pause the appliance, carefully turn the food over, then put back the tray into the appliance to continue cooking the food with the same recipe and temperature with the remaining 1/2 time.
Burnt Smell	Plug is not secure in main switch.	It is recommended that you run the oven (without any food or accessories in it) at the highest temperature (230°C) on the toast function for about 15 minutes, it may slightly emit smell and smoke. This is normal and only last for a short time.
	Food residue build-up inside the cavity, on heating elements or in crumb tray.	Refer to "CLEANING AND MAINTENANCE".

Problem	Cause of Issue	Solution
Display "E1"	The upper sensor is open circuit.	Please contact the Service Centre for repair.
Display "E2"	The upper sensor short circuit.	Please contact the Service Centre for repair.
Display "E3"	The lower sensor is open circuit.	Please contact the Service Centre for repair.
Display "E4"	The lower sensor short circuit.	Please contact the Service Centre for repair.
Display "E5"	Furnace temperature overheating.	When the temperature drops to a low temperature, then restart again.