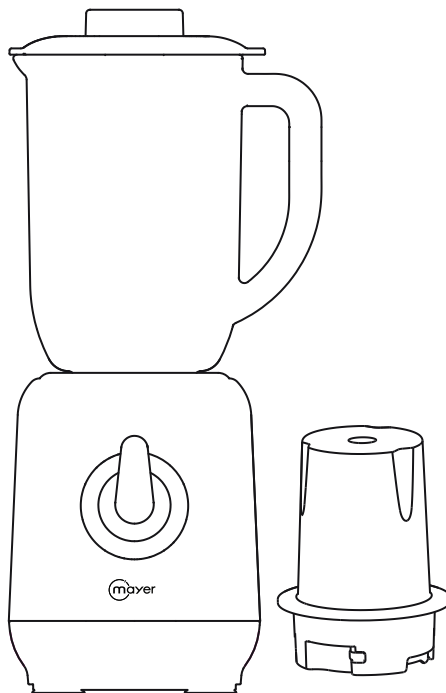




Blender Jar with Grinder MMBJ1310



BLENDER

Please read this instruction manual thoroughly before operating and keep it for future reference

IMPORTANT SAFETY INSTRUCTIONS

- This appliance is not intended for use by persons (including children) with reduced physical, sensory or mental capabilities, or lack of experience and knowledge unless they have been given supervision or instruction concerning the use of the appliance by a person responsible for their safety.
- Children should be supervised to ensure that they do not play with the appliance.
- Do not operate any appliance with a damaged cord or plug or after the appliance malfunctions, or has been dropped or damaged in any manner. If the power cord is damaged, it must be replaced by the Service Centre to avoid a hazard.
- When using electrical appliances, basic safety precautions should always be followed to reduce the risk of fire, electric shock, and/or injury.
- Do not immerse appliance, cord or plug in water or other liquid.
- Unplug from the outlet when not in use and before cleaning.
- Do not unplug the appliance by pulling on the cord.
- Use the accessories from the appliance only, as other accessories not from the appliance may cause fire, electric shock or injury.
- Do not leave the appliance in operation unattended.
- Do not use the appliance in high temperature environment, please ensure proper ventilation while the appliance is operating.
- Place the appliance on a flat surface area.
- Do not unlock the lid when the appliance is in operation. Allow the blade to stop completely before unlocking.
- Do not put your fingers or utensils into the container while the appliance is switched on.
- Please dice the foods first before placing them into the blender, be sure to not blend frozen solid foods.
- Please do not blend foods that are of very hard textures, such as bones, crude drugs / traditional Chinese medicines.
- Please do not overload the appliance capacity.
- Be careful when blending hot liquids as they can be ejected out of the appliance due to sudden steaming.
- Switch off and unplug the appliance before changing the accessories.

Warning:

- The blades are sharp, please handle them with care when in use and while cleaning.
- Keep the blades out of reach from children.

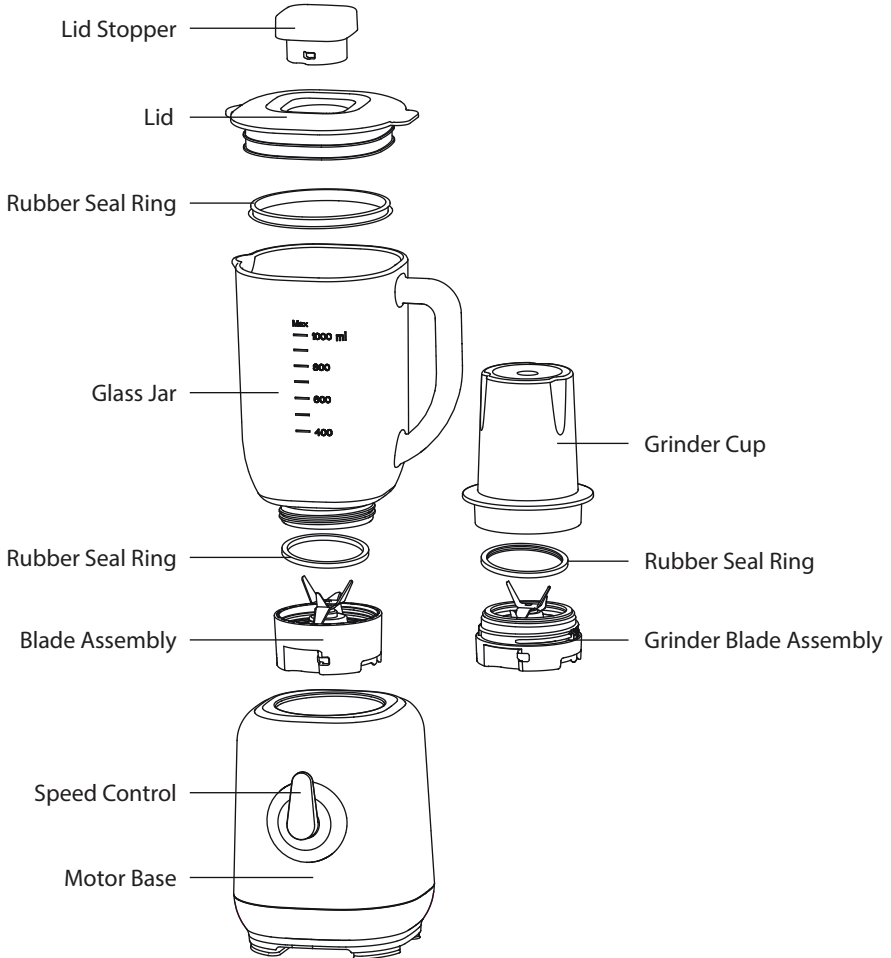
Note:

- For better and long-lasting performance of the blender, please do not run the blender continuously for more than 30 seconds. If you need to use the blender more times, allow a 60 seconds gap before blending again.

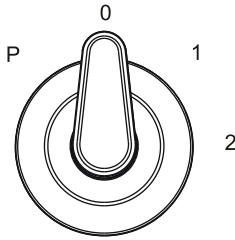
PRODUCT TECHNICAL PARAMETERS

MODEL	RATED VOLTAGE	RATED POWER	GROSS CAPACITY	GRINDER JAR CAPACITY
MMBJ1310	220-240V, 50/60Hz	350W	1L	100ml

INTRODUCTION OF PARTS



Control Panel



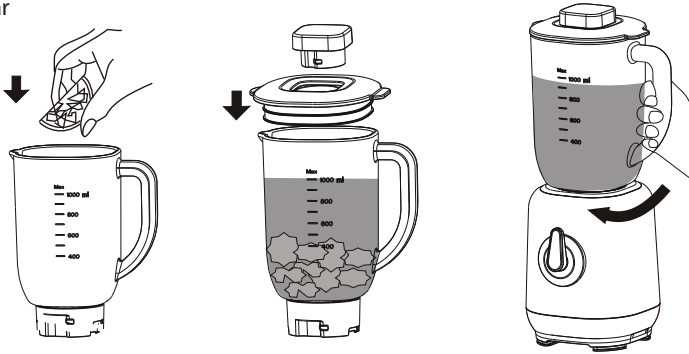
Speed Control Guide		
Speed	Uses	Operating Usage
P: Pulse	Mix, stir, and grind	Operate for 10 seconds and stop for 3 seconds, and operate 3 times in one cycle. Be sure to stop to let the blender cool down for 1 minute before resuming.
0: Power off/ Stop	Stop the blender	-
1: Slow	Soft ingredients such as watermelon, strawberry, etc.	Operate for 30 seconds, in one cycle. Be sure to stop to let the blender cool down for 1 minute before resuming.
2: Fast	Hard ingredients suchs as apples, carrots, etc.	Operate for 30 seconds, in one cycle. Be sure to stop to let the blender cool down for 1 minute before resuming.

Note: When using the various speeds and repeated 3 times, be sure to let the blender cool down for 15 minutes before operating again.

CONTROLS AND OPERATIONS

How to use

Blender Jar



1. Position the motor base on a flat, dry and sturdy platform or table.
2. Position and place the blender jar onto the motor base and turn it 30° clockwise. Ensure that it is seated firmly onto the motor base.
3. Prepare the ingredients and put them into the blender jar.
4. Mount the blender cover well.
5. Ensure that the switch is at "0" speed, plug in and use pulse "P" for a bout 2-3 times as pre-blending. If there is anything abnormal, unplug the appliance and re-assemble it as above.
6. Turn to speed "1" or "2" for blending, according to the amount and texture of the ingredients.

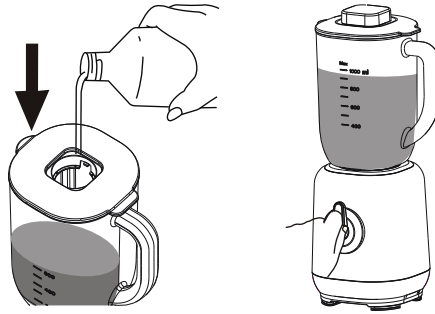
Note: Do not operate the appliance continuously for more than 1 min. Stop for 3 mins for cooling after each operation cycle.

7. During the operation, you can take out the measuring cup on the blender cover by turning anticlockwise, and add water or other ingredients you want through the filling hole. DO NOT open the blender cover to add ingredients when operating.

Recommended operating guide

- By using the different speeds, this will adjust and affect the texture of the food.
- Please refer to the table below for the recommended speed selection when blending different types of food:

Ingredient	Speed
Watery texture such as milk, juice, watermelons, etc	1 or 2
Thick texture such as tomato paste, apples, etc	2
Solid foods such as beans, peppers, carrots, etc	P

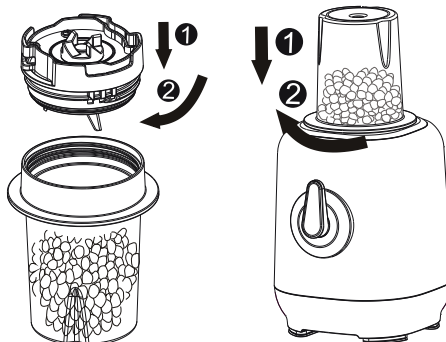


- Add ingredients into the glass jar, do not add too much ingredients at one time.
- Add the ingredients in a little at a time, you can also add ingredients from the by opening

Note

- Push slowly and gently when feeding food.
- Precut food into pieces of approx. 1.5 x 1.5 x 1.5 cm.
- Feed gradually for better effect. When cutting soft food, choose lower speed to avoid the food from turning watery. If large quantity food needs to be cut, please cut it in several batches.
- Proper drinking water is necessary when blending.
- Do not add too much ingredient each time. The maximum capacity for the glass jar is 1000ml.
- If you do not know which speed to choose, please use PULSE speed. Turn the knob to "P" and hold the knob for blending, and release to stop.
- Each pulse timing is a few seconds, repeat operation until the food is done
- Do not blend for more than 30 seconds, each cycle of continuous blending should be cooled down for at least 2 minutes.
- Do not remove the lid while the appliance is in blending.

Grinder Cup



1. Position the motor base on a flat, dry and sturdy platform or table.

2. In an upright position, turn the base of the grinder cup anticlockwise to open up and separate the grinder base and cup.
3. Put the ingredients into the grinder cup.
4. Place back the grinder base on top of the cup and cover it, then turn the base clockwise and close the grinder cup tightly.
5. Invert and turn the sealed grinder cup upside-down. Position and place the inverted grinder cup onto the motor base. Turn it in clockwise direction to let it sit firmly onto the blender base.
6. Ensure that switch is at "0" speed, plug in and use pulse "P" for about 1-2 times as pre-grinding. If there is anything abnormal, unplug the appliance and re-assemble it as above.
7. Choose speed "1" or "2" for grinding, according to the amount and texture of the ingredients.
 - Note: Do not operate the appliance continuously for more than 30 secs. Stop for 1 min for cooling after each operation cycle.
8. Turn the speed control knob to "0" to switch off the appliance and turn the inverted grinder cup anti-clockwise to take it out from the motor base.
9. Turn back the grinder cup into upright position, remove the grinder base to open up the grinder cup.
10. Transfer out the grinded powder from the grinder cup into a container.

Note:

- Do not put too much ingredients exceeding half the grinder cup, and make sure the grinder assembled and closed tightly, otherwise the ingredients may spill out while the appliance is operating.
- Adding ingredient should not exceed the limit MAX(100ml) line.
- If it exceeds the maximum quantity, it will make the appliance blend slower and not smooth.
- Reduce the number of ingredients and re-blend.
- The grinder cup is intended for grinding dry food such as bean, pepper etc.
- When grinding food, and the blade is not grinding the ingredients, stop the grinder and switch the appliance off.
- Stir the ingredients to loosen them from the sides, then grind again.
- Do not operate for more than 30 seconds per time, each cycle of continuous blending should allow the appliance to cool down for at least 2 minutes.

CLEANING AND MAINTENANCE

- Unplug the blender from the power socket before cleaning.
- Clean the parts immediately after use, especially the parts that are in contact with food.
- Do not wash or immerse the motor base into the water. Only wipe it with a soft damp cloth.
- Do not wash the appliance in the dishwasher.

Cleaning the blender jar

- Unplug out and remove the blender jar that is needed to be clean and use a mild detergent to clean.
- Rinse the blender jar under running water.
- Pour warm water and mild detergent into the blender jar, be sure to not exceed the maximum capacity.
- Place the lid back onto the blender jar.
- Turn the knob to "P" and let the water and soap blend for a few seconds before running the blender jar underwater to wash.
- Repeat the above steps until all the detergent has been washed off.

Cleaning the grinder cup

- Unscrew the blade from the grinder cup and use a mild detergent to wash the accessory which is needed to be clean, be careful of the sharp blades when cleaning.
- Rinse the accessory under the running water to wash again and wipe the accessory with a dry dishcloth and assemble again.
- If the motor is dirty, use a damp soft cloth to wipe it down. Do not flush the motor with water.

Note

- Do not wash with boiling water.
- Do not disinfect with a disinfecting product.
- Be careful of the sharp blade when cleaning.