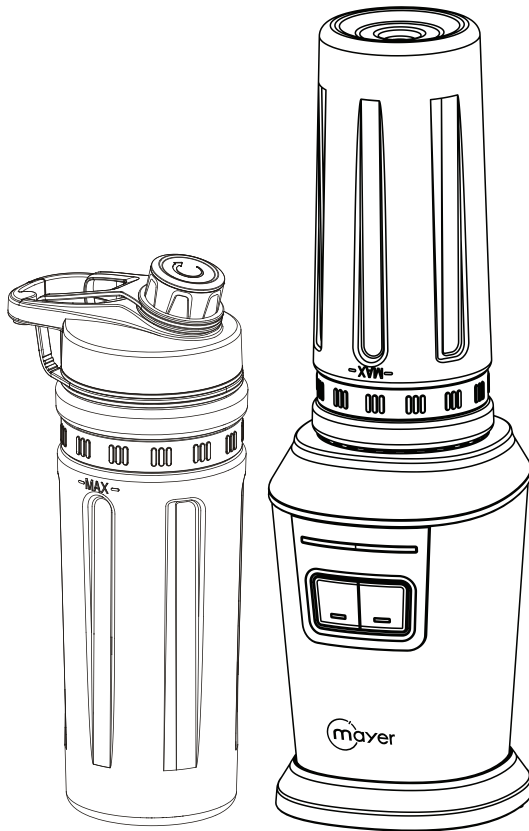




# Personal Power Blender MMPB1078



## BLENDER

Please read this instruction manual thoroughly before operating and keep it for future reference

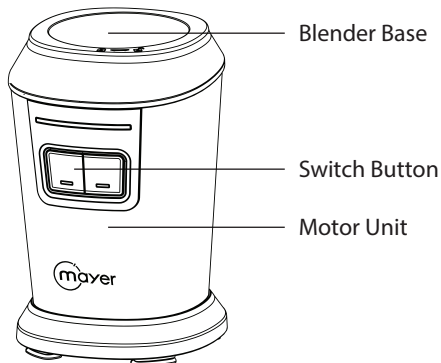
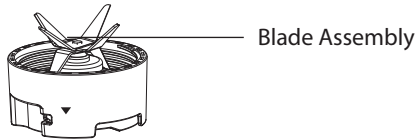
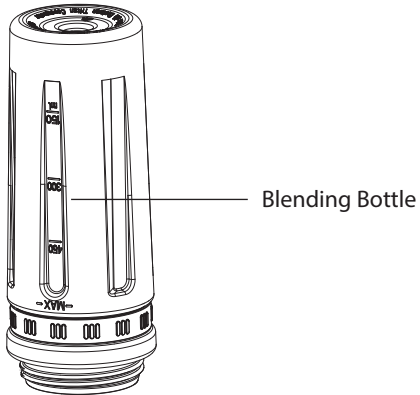
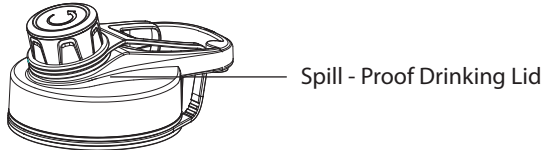
## IMPORTANT SAFETY INSTRUCTIONS

- This appliance is not intended for use by persons (including children) with reduced physical, sensory or mental capabilities, or lack of experience and knowledge unless they have been given supervision or instruction concerning the use of the appliance by a person responsible for their safety.
- Children should be supervised to ensure that they do not play with the appliance.
- Do not operate any appliance with a damaged cord or plug or after the appliance malfunctions, or has been dropped or damaged in any manner. If the power cord is damaged, it must be replaced by the Service Centre to avoid a hazard.
- When using electrical appliances, basic safety precautions should always be followed to reduce the risk of fire, electric shock, and/or injury.
- Do not immerse appliance, cord or plug in water or other liquid.
- Unplug from the outlet when not in use and before cleaning.
- Do not unplug the appliance by pulling on the cord.
- Use the accessories from the appliance only, as other accessories not from the appliance may cause fire, electric shock or injury.
- Do not let the cord hang over the edge of the table or counter or touch hot surfaces.
- Never leave the appliance unattended when in use.
- Avoid contact with moving parts. Keep hands and utensils out of the sports bottle while blending to prevent personal injury or damage to the blender.
- The blade is sharp. Handle with care.
- To reduce the risk of injury, never place cutter-assembly blades on the base without the sports bottle properly attached.
- Do not attempt to bypass the interlock safety switch system that powers the appliance.
- Maximum temperature of which is 60°C.
- When handling hot liquids, use extra caution, because they may release steam or may splash and scald the user. Before pouring hot liquids into the blending container and blending them, it is suggested that let them cool to at least 40°C.
- Do not use at outdoors or for commercial purposes, this appliance is for household use only.
- Always operate on a flat and sturdy surface.
- Unplug the blender when not in use, before taking off or putting on parts and before cleaning.
- In case of damage and deformation of the parts. Do not use hot water and disinfect cabinets that temperatures exceed 60°C to wash or sterilize them.
- Use this appliance for its intended use as described in this manual. The use of attachments not made by the manufacturer, including canning or ordinary jar and processing assembly parts, is not recommended as it may cause a risk to persons.

## PRODUCT TECHNICAL PARAMETERS

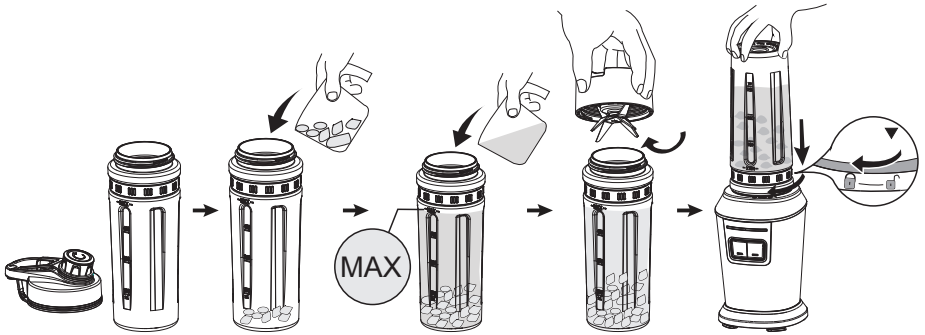
MODEL	RATED VOLTAGE	RATED POWER	GROSS CAPACITY
MMPB1078	220-240V, 50/60Hz	800W	600ml

## INTRODUCTION OF PARTS



# CONTROLS AND OPERATIONS

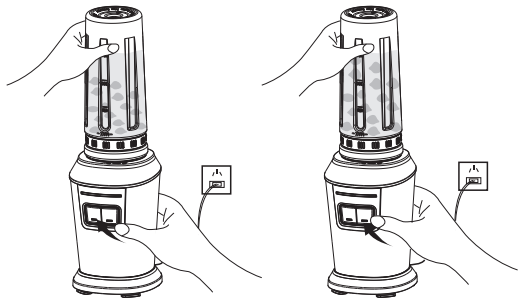
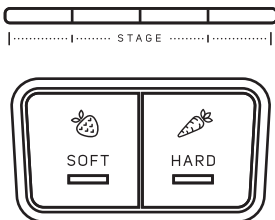
## How to use



1. Position the motor base on a flat, dry and sturdy platform or table.
2. Unscrew the bottle lid and place the blending bottle on the same flat, dry and sturdy platform or table, with the open end facing up.
3. Prepare the solid ingredients and put them into the blender bottle, then add liquid ingredients into the blending bottle.

Note:

- Make sure all ingredients added into the blender do not go beyond the maximum indicator line.
  - The solid ingredients placed in the blender should be in order of hardest to softest texture.
4. Screw tight the Blade assembly on the open end of the blending bottle. Ensure that it is tightly sealed and secure.
  5. Turn the blending bottle upside down, line up arrows on the blade assembly to match the open lock icon on the base, and place the blending bottle into the base.
  6. Lock the blending bottle in the motor base by turning the blending bottle in clockwise direction in the base.
  7. The lights on the button will turn on and start flashing, which indicates the appliance is ready to use.



8. Press the button “SOFT” or “HARD”, depending on the ingredients you have placed. The appliance will start running the automated blending program will start running based on the selected mode. The light for the selected mode button will remain on, and stage lights will progressively go on, which indicates the different points of stage of the program throughout the automated blending program.  
Note:
  - “SOFT” mode is good for blending softer texture foods such as strawberries, tomatoes, bananas etc.
  - “HARD” mode is good for blending harder texture foods such as carrots, apples, pears etc.
  - Do not operate the appliance continuously for more than 1 min. Stop for 3 mins for cooling after each operation cycle.
9. “SOFT” mode automated blending program’s operation cycle duration is 40 seconds, while “HARD” mode automated blending program’s operation cycle duration is 60 seconds.  
Note: At any point of time if required to stop the blending program, press the selected button again and the blender will stop blending and turn off.
10. When finish blending, all the stage lights will be on and the button lights will keep flashing.
11. Unlock the blending bottle from the motor base by turning the blending bottle in anti-clockwise direction in the base, then remove the bottle from the motor base.
12. Unscrew the blade assembly and replace with drinking lid.
13. After screwing the drinking lid, the bottle can be brought out as a water bottle.

#### Recommended Operating Guide & Blending Tips

- Put liquid ingredients in the blender bottle first, followed by solid ingredients, unless a recipe says otherwise.
- Cut all harder textured fruits and vegetables into pieces no larger than 3/4 inch (1.8cm) to 1 inch (2.5cm).
- For optimal performance, place desired ingredients in the blending bottle in accordance from liquids, followed by softer textured foods, then to harder textured foods.  
For Example: Liquids → Fresh ingredients → Frozen Fruits → Yoghurt → Ice-Cream.
- Do not overload the blender bottle. The ingredients in the blender bottle should not be more than the maximum indicator line. If the motor stalls, turn the blender off immediately, unplug the unit and let it cool for at least 15 minutes. Then, remove a portion of the food and continue using the blender again.
- This blender cannot be used for mashing potatoes, whipping egg whites or substitute any dairy toppings, mixing stiff dough or grind raw meat.

#### Ingredients blending proportion guide

Ingredient	Water or Milk	Total Capacity
240g	360g	600ml
120g	180g	300ml

## CLEANING AND MAINTENANCE

- Unplug the blender from the power socket before cleaning.
- Clean the parts immediately after use, especially the parts that are in contact with food.
- Do not wash or immerse the motor base into the water. Only wipe it with a soft damp cloth.
- Do not wash the appliance in the dishwasher.

### Cleaning the blender bottle

- Unplug out and remove the blender bottle that is needed to be clean and use a mild detergent to clean.
- Rinse the blender bottle under running water.
- Pour warm water and mild detergent into the blender bottle, be sure to not exceed the maximum capacity.
- Place the blade assembly onto the blender bottle.
- Turn on the blender and let the water and soap blend for a few seconds before running the blender bottle underwater to wash.
- Repeat the above steps until all the detergent has been washed off.

### Note:

- Do not wash with boiling water.
- Do not disinfect with a disinfecting product.
- Be careful of the sharp blade when cleaning.