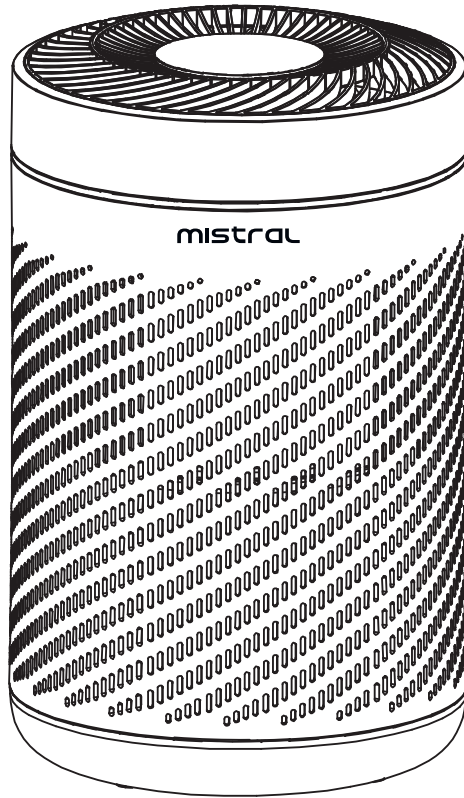


mistral

Air Purifier MAPF03



Please read this instruction manual thoroughly before operating and keep it for future reference

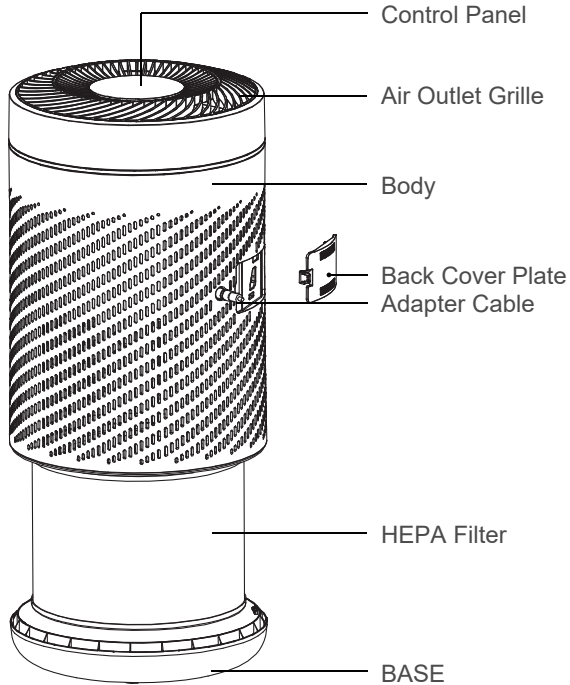
IMPORTANT SAFETY INSTRUCTIONS

- This appliance is not intended for use by persons (including children) with reduced physical, sensory or mental capabilities, or lack of experience and knowledge unless they have been given supervision or instruction concerning the use of the appliance by a person responsible for their safety.
- Children should be supervised to ensure that they do not play with the appliance.
- Do not operate any appliance with a damaged cord or plug or after the appliance malfunctions, or has been dropped or damaged in any manner. If the power cord is damaged, it must be replaced by the Service Centre to avoid a hazard.
- When using electrical appliances, basic safety precautions should always be followed to reduce the risk of fire, electric shock, and/or injury.
- Do not immerse appliance, cord or plug in water or other liquid.
- Unplug from the outlet when not in use and before cleaning.
- Do not unplug the appliance by pulling on the cord.
- Use the accessories from the appliance only, as other accessories not from the appliance may cause fire, electric shock or injury.
- Indoor and household use only.
- Do not place other items on top of the appliance, and forbid sitting or standing on this appliance.
- Please use the original filter provided by the factory.
- Do not insert the fingers or objects into the air inlets or air outlets to prevent the product from physical damages or malfunction.
- Do not spray flammable substances near the appliance; Do not spray water directly on the appliance or use chemical cleaners like alcohol or hydrochloric acid, etc.; Do not place water containers, medicines, or flammable materials on the appliance.
- Do not block the air inlets/outlets of the appliance with any item.
- This appliance cannot replace natural ventilation and other appliances like the vacuum cleaner, kitchen ventilator, etc
- When the appliance is working, it must be placed on a dry, flat and stable floor, with at least 30cm space reserved around it.
- Do not put it in a place with direct sunlight.
- To prevent electromagnetic disturbance, the appliance must keep a certain distance from the TV, radio, microwave oven and others.
- The mist produced by the ultrasonic humidifier may affect the PM2.5 detection of this appliance, and both should maintain a certain distance.
- Do not disassemble or modify this appliance without authorization to avoid accidents.

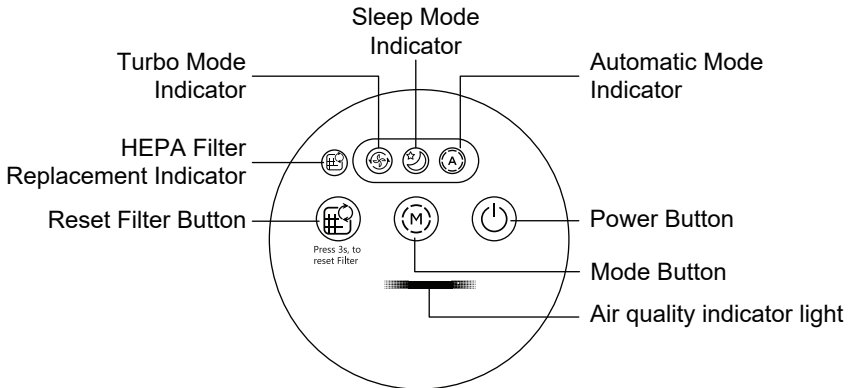
PRODUCT TECHNICAL PARAMETERS

MODEL	RATED VOLTAGE	RATED POWER	CADR	AREA
MAPF03	24V=	22W	250 m ³ /hr	25 m ²

INTRODUCTION OF PARTS



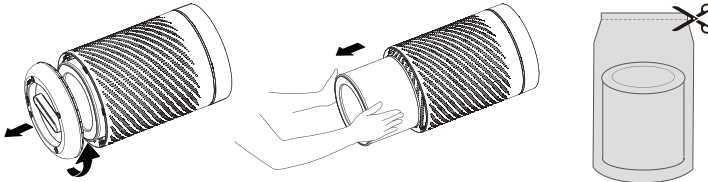
Control Panel



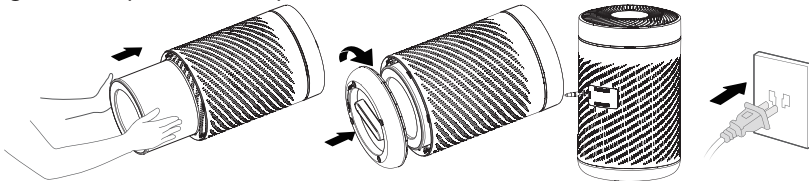
CONTROLS AND OPERATIONS

Installation

- Remove the base plate, and take out the HEPA filter.
- Remove the protective film of the filter.



- Install in the new HEPA filter, and put back the base plate.
Plug in the adapter cable and power cord.



Control panel

Power

- Press the power button, "⏻", to switch on the appliance.
- Power on for the first time, the display panel flashes for 1s, and then the screen is turned off.
- The appliance will enter standby mode.

Air quality

- When the sensor enters the warm-up state, the air quality indicator, "██████████"; will flash after 3 seconds in a sequence before indicating the air quality level.
- Blue light: Excellent Air Quality
- Green light: Good Air Quality
- Orange light: Average Air Quality
- Red light: Poor Air Quality

Mode

- Press the mode button, "Ⓜ", to adjust the speed settings between
Turbo mode "⚡"
Sleep mode "🌙"
Automatic mode "Ⓐ"

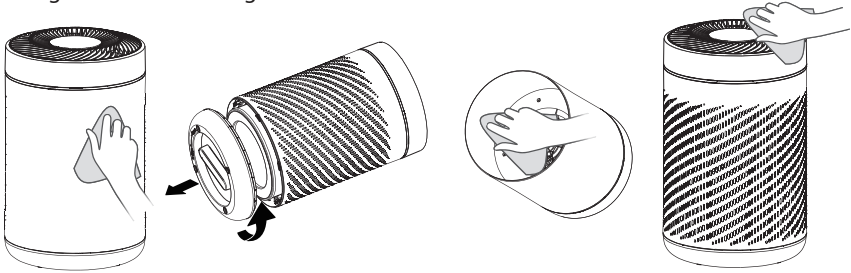
Filter

- When the filter needs to be changed, this indicator will light up, "Ⓜ", press and hold the reset filter button, "Ⓜ", for 3 seconds to reset it.

CLEANING AND MAINTENANCE

Cleaning

- Wipe the body of the appliance with a soft towel.
Vacuum up the dust with a vacuum cleaner or wipe it with a cloth within the appliance housing and the air outlet grille.



It is recommended to clean the HEPA-filter at least once every two weeks.

The cleaning cycle can be based on the usage environment and time, seriously polluted environment should be cleaned frequently.

Cleaning of the HEPA-filter

- Unplug the appliance, and take out the HEPA-filter.
- Vacuum the dust or wipe it with a dry cloth.
- Re-assemble the HEPA-filter, and plug in the appliance, and start it

Replacement of the filter components

- When the filter replacement indicator is lighted up, it's an indicator that the HEPA filter needs to be replaced.
- If it has not been replaced, the prompt will appear at every startup.
- After replacing the new filter, press the filter button for 3 seconds to reset the HEPA filter.

Warranty & Customer Service

SCAN FOR



e-Warranty

e-Warranty Registration at <https://www.mayer.sg>

MAYER MARKETING PTE LTD

Customer Service Hotline: 6542-8383 (Mon - Fri 9:00am to 5:00 pm)

Service Centre Operating Hours:

Mon - Fri: 9:00am to 5:00pm

Sat: 9:00am to 12:00pm

Closed on Sunday & Public Holidays

71 Ubi Crescent, #06-02, Excalibur Centre, Singapore 408571.