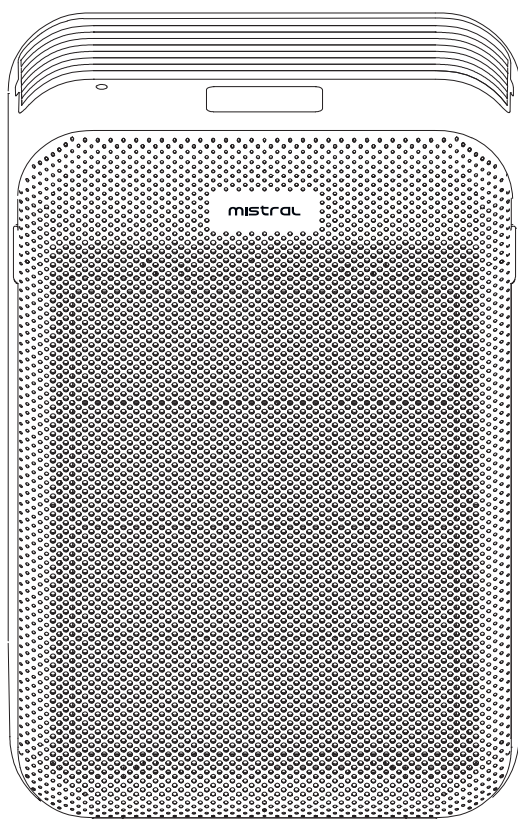


mistral

Smart Air Purifier MAPF32



Please read this instruction manual thoroughly before operating and keep it for future reference

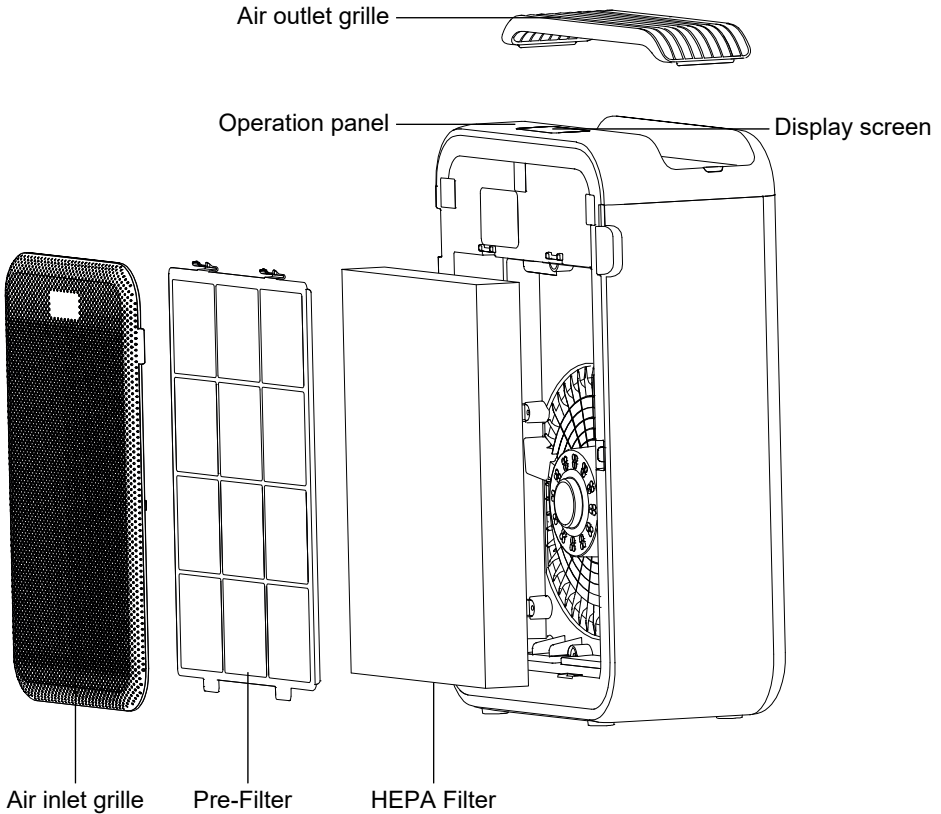
IMPORTANT SAFETY INSTRUCTIONS

- This appliance is not intended for use by persons (including children) with reduced physical, sensory or mental capabilities, or lack of experience and knowledge unless they have been given supervision or instruction concerning the use of the appliance by a person responsible for their safety.
- Children should be supervised to ensure that they do not play with the appliance.
- Do not operate any appliance with a damaged cord or plug or after the appliance malfunctions, or has been dropped or damaged in any manner. If the power cord is damaged, it must be replaced by the Service Centre to avoid a hazard.
- When using electrical appliances, basic safety precautions should always be followed to reduce the risk of fire, electric shock, and/or injury.
- Do not immerse appliance, cord or plug in water or other liquid.
- Unplug from the outlet when not in use and before cleaning.
- Do not unplug the appliance by pulling on the cord.
- Use the accessories from the appliance only, as other accessories not from the appliance may cause fire, electric shock or injury.
- Indoor and household use only.
- Do not place other items on top of the appliance, and forbid sitting or standing on this appliance.
- Please use the original filter provided.
- Do not insert the fingers or objects into the air inlets or air outlets to prevent the appliance from physical damages or malfunction.
- Do not spray flammable substances near the appliance.
- Do not spray water directly on the appliance or use chemical cleaners like alcohol or hydrochloric acid, etc.
- Do not place water containers, medicines, or flammable materials on the appliance.
- Do not block the air inlets/outlets of the appliance with any item.
- When the appliance is working, it must be placed on a dry, flat and stable floor, with at least 30cm space reserved around it.
- This appliance cannot replace natural ventilation and other appliances like the vacuum cleaner, kitchen ventilator, etc.
- Do not place the appliance under direct sunlight.
- To prevent electromagnetic disturbances, the appliance must be kept a certain distance from the TV, radio, microwave oven and others.
- The mist produced by the ultrasonic humidifier may affect the PM2.5 detection of this appliance, and both should maintain a certain distance.
- Do not disassemble or modify this appliance without authorization to avoid accidents.
- This appliance incorporates an earth connection for functional purposes only.

PRODUCT TECHNICAL PARAMETERS

MODEL	RATED VOLTAGE	RATED POWER	CADR	AREA
MAPF32	220-240V~50/60Hz	36W	360 m ³ /hr	36 m ²

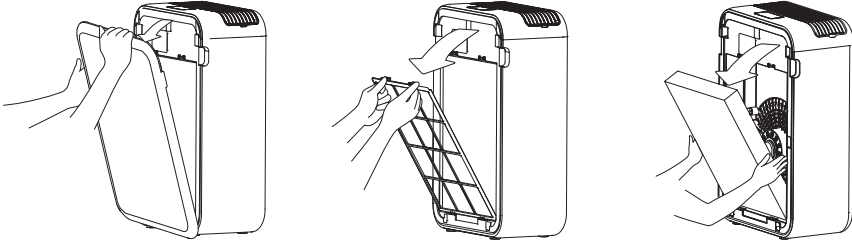
INTRODUCTION OF PARTS



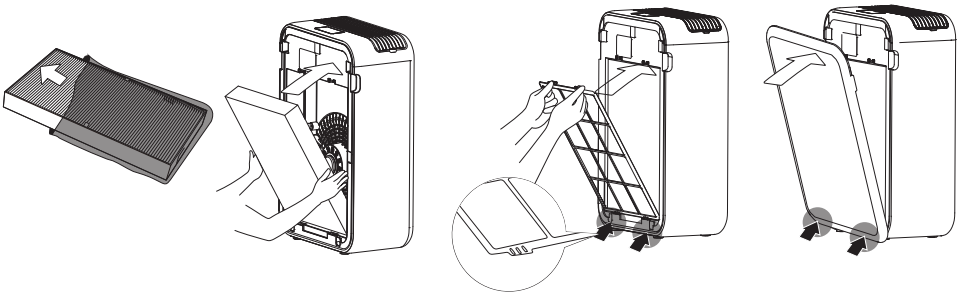
CONTROLS AND OPERATIONS

Installing

- Remove the air inlet grill to remove the pre-filter.
- Press down and pull the U-shaped snap joint to take out the pre-filter.
- To take out the HEPA filter, hold both sides of the filter with both hands, and pull outward.



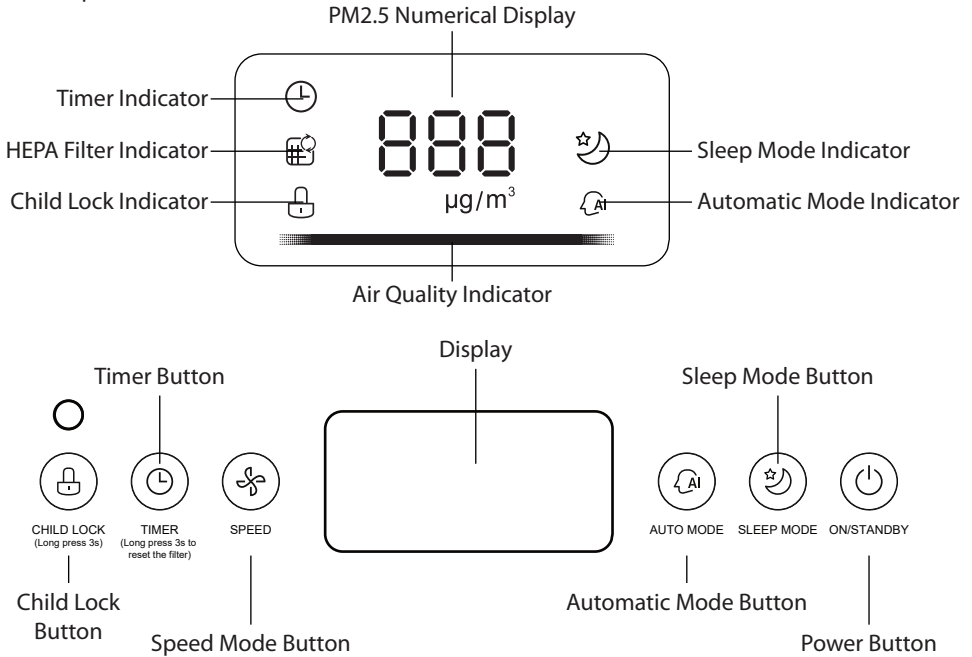
- Remove the protective film of the filter assembly.
- Then place in the HEPA filter and the pre-filter.
- Align the slot position at the bottom, and click into the upper U-shaped snap joint.
- Place the air inlet grille back and the plug power supply.
- Align the slot position at the bottom, press both sides of the upper part of the air inlet grill to buckle it up.



Attention

- This appliance has a disassembling protection function, so it cannot be started normally until all air inlet grilles are placed correctly.
- In the case of continuous electricity, switch on the appliance each time before switching it to the standby state.
- The appliance has a memory function where if the power goes out, it restores the appliance back to the previous function it was on before the power outage.

Control panel



On/standby

- Remove the protective film of the filter assembly, and place the filter into the appliance.
- Press the power button, "⏻", to switch on the appliance.
- Power on for the first time, the display panel flashes for 1s, and then the screen is turned off.
- The appliance will enter standby mode.

Warm up

- When the sensor enters the warm-up state, the PM2.5 numerical display shows "---", and is normal after 10s and the air quality indicator, "██████████", will flash after 3 seconds in a sequence before indicating the air quality level.
- Blue light: Excellent Air Quality
- Green light: Good Air Quality
- Orange light: Average Air Quality
- Red light: Poor Air Quality

Speed

- Press the "🌀" button to switch between the low, medium, and high speeds

Timer

- Press the "⏸" button to adjust the timer from 1/2/4/8h timing.
- Long press the button to reset the filter.

Automatic mode

- When the appliance is powered on for the first time it enters the automatic mode.
- Press the Automatic mode "⏸" and it will adjust the wind speed automatically according to the air quality.

Sleep mode

- Press the Sleep mode "⏸" it makes the wind slightly larger to ensure the purification effect if the is $PM_{2.5} > 50$ and if it is $PM_{2.5} < 50$, it will adjust to low noise effect.

Childlock

- Press and hold the "⏸" button for 3 seconds to activate the function to prevent children from changing the other functions on the appliance.

CLEANING AND MAINTENANCE

Cleaning

- Wipe the body of the appliance with a soft towel.
- Vacuum up the dust with a vacuum cleaner or wipe it with a cloth within the appliance housing and the air outlet grille.



It is recommended to clean the HEPA-filter at least once every two weeks.

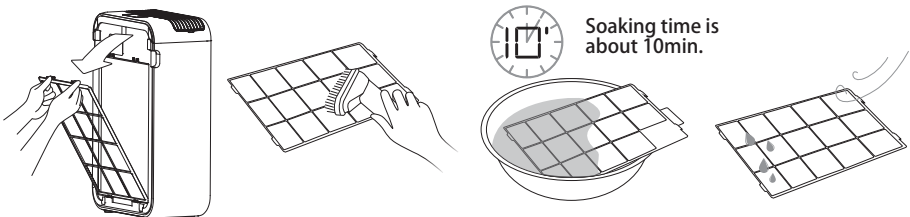
The cleaning cycle can be based on the usage environment and time, seriously polluted environment should be cleaned frequently.

Cleaning of the HEPA-filter



- Unplug the appliance, and take out the HEPA-filter.
- Vacuum the dust or wipe it with a dry cloth.
- Re-assemble the HEPA-filter, and plug in the appliance, and start it

Cleaning of the Pre-Filter

- Unplug the appliance, and take out the pre-filter.
- Vacuum the dust or wipe it with a cloth.
- If there is a lot of dirt, you can use the common kitchen detergents, make sure to dilute and used them first before you do the cleaning.
- If there is stubborn dirt, you can soak the filter for about 10 minutes before cleaning.
- Be sure to let the pre-filter dry thoroughly before placing it back into the appliance.



Replacement of the filter components

- Filter model: FC-35S1A (include 1)
- It is recommended to clean the pre-filter at least once every two weeks.
- When the filter replacement indicator, "", has lit up, it's an indicator that the HEPA filter needs to be replaced.
- If it has not been replaced, the prompt will appear at every startup.
- After replacing the new filter, press the filter button, "", for 3 seconds to reset the HEPA filter.

TROUBLESHOOT

Problem	Cause of Issue	Solution
E1	Disassembly protection reminder	Properly install the inlet grille
Eu	Sensor failure	Please contact the Service Centre
E3	Abnormal fan speed	Please contact the Service Centre



Disposal

Do not dispose of electrical appliances as unsorted municipal waste, use separate collection facilities. Contact your local government for information regarding the collection systems available.

If electrical appliance are disposed of in landfills or dumps, hazardous substances can leak into the ground water and get into the food chain, damaging your health and well-being.

Warranty & Customer Service

SCAN FOR



e-Warranty

e-Warranty Registration at <https://www.mayer.sg>

MAYER MARKETING PTE LTD

Customer Service Hotline: 6542-8383 (Mon - Fri 9:00am to 5:00 pm)

Service Centre Operating Hours:

Mon - Fri: 9:00am to 5:00pm

Sat: 9:00am to 12:00pm

Closed on Sunday & Public Holidays

71 Ubi Crescent, #06-02, Excalibur Centre, Singapore 408571.