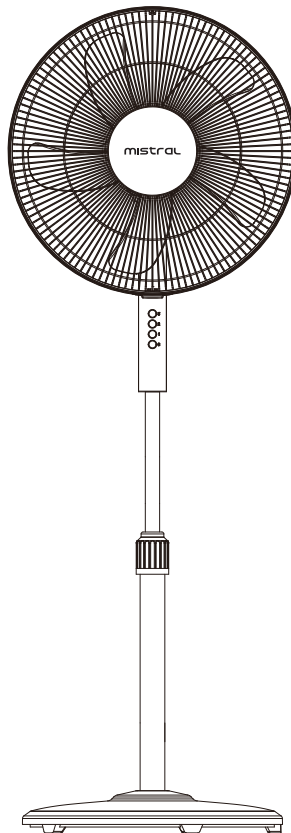


mistral

16" Stand Fan MSF1603



Please read this instruction manual thoroughly before operating and keep it for future reference

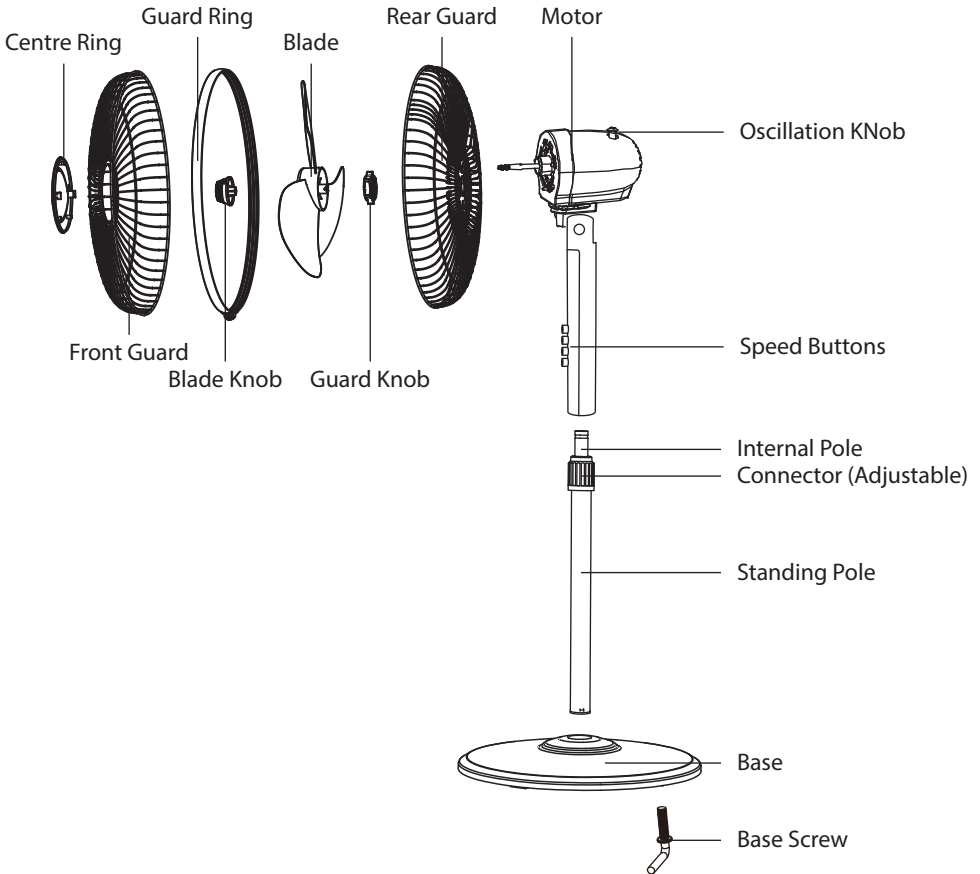
IMPORTANT SAFETY INSTRUCTIONS

- This appliance is not intended for use by persons (including children) with reduced physical, sensory or mental capabilities, or lack of experience and knowledge unless they have been given supervision or instruction concerning the use of the appliance by a person responsible for their safety.
- Children should be supervised to ensure that they do not play with the appliance.
- Do not operate any appliance with a damaged cord or plug or after the appliance malfunctions, or has been dropped or damaged in any manner. If the power cord is damaged, it must be replaced by the Service Centre to avoid a hazard.
- When using electrical appliances, basic safety precautions should always be followed to reduce the risk of fire, electric shock, and/or injury.
- Do not immerse appliance, cord or plug in water or other liquid.
- Unplug from the outlet when not in use and before cleaning.
- Do not unplug the appliance by pulling on the cord.
- Use the accessories from the appliance only, as other accessories not from the appliance may cause fire, electric shock or injury.
- Never insert fingers, pencils or any other object through the fan guards when the fan is running.
- Unplug the appliance when moving it from one location to another.
- Ensure that the appliance is switched off from the power supply before removing the guards for cleaning and maintenance.
- Do not use the appliance near the window, as wet weather may cause an electrical hazard.
- Do not leave the appliance operating when not in use.
- The appliance is intended for household and indoor use only.

PRODUCT TECHNICAL PARAMETERS

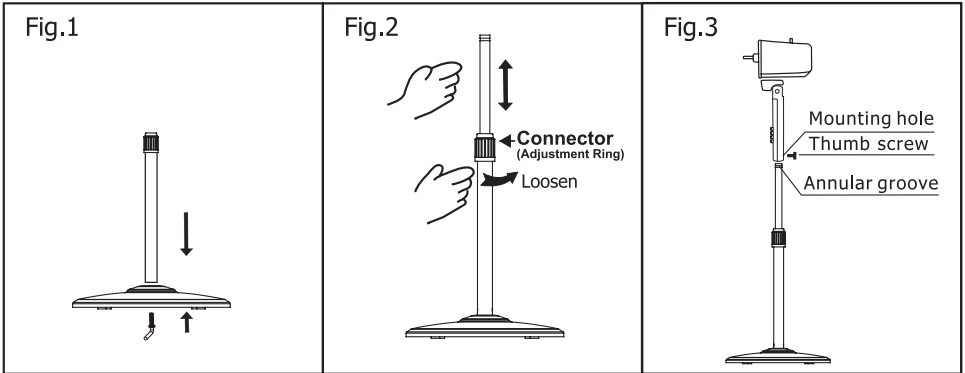
MODEL	RATED VOLTAGE	RATED POWER
MSF1603	220-240V~50Hz	50W

INTRODUCTION OF PARTS



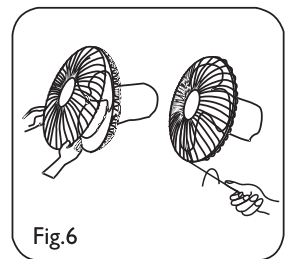
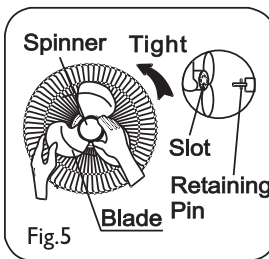
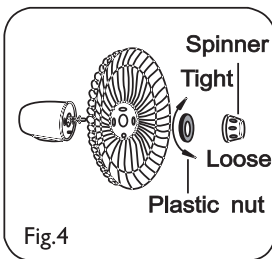
CONTROLS AND OPERATIONS

- Open the gift box and check the parts by referring to the parts illustration drawing.
- Insert the lower standing pole into the base and fasten the base screw. (fig. 1)
- Loosen the the connector and adjust the internal pole to the desired height.
- Loosen the thumb screws on the back of the fan body and attach it to the internal pole. (fig. 2).
- Fasten the thumb screw in alignment with the groove on the internal pole. (fig. 3).



Assemble of the blade and guards

- Remove the spinner and the plastic nut from the front of the motor.
- Fix the rear grill into the motor and tighten the plastic nut. (fig. 4)
- Discard plastic sleeve on shaft. Insert the blade into shaft. Make sure the stopper pin is fitted into groove of the blade. Turn the spinner counter clockwise to tighten the blade. (fig. 5)
- Fix both grills with plastic rim and then use screwdriver to tighten the locking screw. (fig. 6)



Control Panel:

Speed

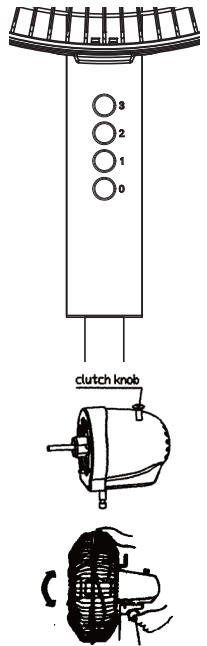
- Press the buttons on the appliance to adjust the speed of the fan.
- 0 - Stop
- 1 - Low
- 2 - Med
- 3 - High

Oscillation

- Manually tilt the fan guard to adjust the angle of the wind.
- Pull or press the clutch knob to start and stop the oscillation.

Height of the fan

- To adjust the height of the fan.
- Loosen the adjustment ring by rising or lowering the internal pole.
- Re-tighten the adjustment ring to secure the height of the fan.



CLEANING AND MAINTENANCE

The fan requires minimal maintenance. Do not try to fix it by yourself.

- Before cleaning and assembling, do not plug the power cord into the socket.
- To ensure that there is adequate air circulation to the motor keep vents at the rear of the motor housing from dust, fluff, etc.
- Do not be used a vacuum cleaner to clean these vents before unplug.
- Do not disassemble the fan to remove fluff.
- Please wipe the exterior parts with a soft cloth which is soaked in mild detergent.
- Do not use any abrasive detergent or solvents to which may scratch the surface.
- Do not use any of followings as cleaning agent: gasoline, thinner, bending.
- Do not allow water or any other liquid into motor housing or interior parts.

Cleaning:

- Be sure to unplug the fan from the electrical supply mains before cleaning.
- Plastic parts should be cleaned with a soft cloth moisten with mild soap. Thoroughly remove soap film with dry cloth.