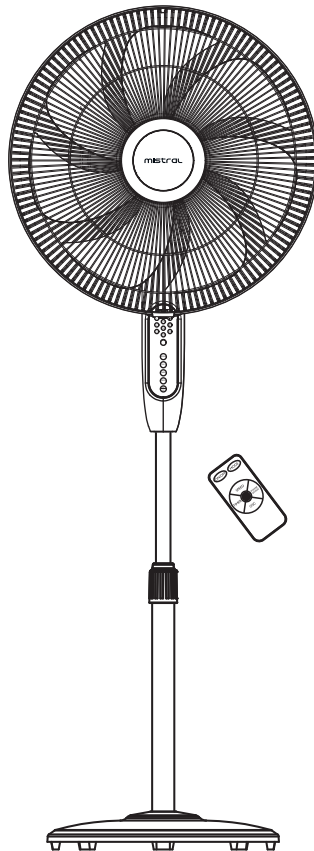


mistral

16" Stand Fan with Remote MSF1637R



STAND FAN

Please read this instruction manual thoroughly before operating and keep it for future reference

IMPORTANT SAFETY INSTRUCTIONS

Warning

- This appliance is not intended for use by persons (including children) with reduced physical, sensory or mental capabilities, or lack of experience and knowledge unless they have been given supervision or instruction concerning the use of the appliance by a person responsible for their safety.
- Children should be supervised to ensure that they do not play with the appliance.
- Do not operate any appliance with a damaged cord or plug or after the appliance malfunctions, or has been dropped or damaged in any manner. If the power cord is damaged, it must be replaced by the Service Centre to avoid a hazard.
- When using electrical appliances, basic safety precautions should always be followed to reduce the risk of fire, electric shock, and/or injury.
- Do not immerse appliance, cord or plug in water or other liquid.
- Unplug from the outlet when not in use and before cleaning.
- Do not unplug the appliance by pulling on the cord.
- Use the accessories from the appliance only, as other accessories not from the appliance may cause fire, electric shock or injury.

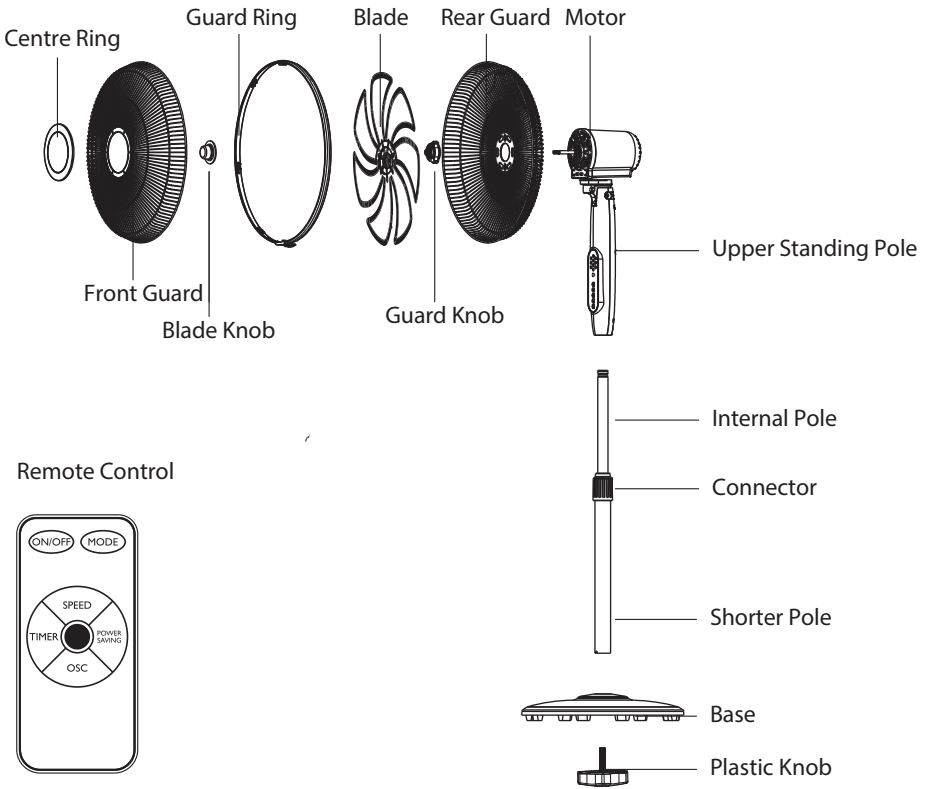
Safety Instructions for Stand Fan

- Do not cover the appliance or near flammable or explosive gases to avoid any fire hazard.
- The appliance must stand upright, it should have a distance of 30 cm other objects, or any items would stop the oscillation of the appliance. Make sure there are no curtains, table cloths, clothing, curtains, hair, etc. near the appliance. They could be sucked into the opening of the fan, which can lead to damage or injury.
- Do not insert your fingers, pencils, or any other objects into the appliance.
- Do not use the appliance outdoors, or in any place where it can be splashed with oil, water, or any substances.
- Do not expose the appliance to direct sunlight.
- Do not use the appliance if it seems to be defective, and if the appliance breaks down, switch the appliance off, and do not repair the appliance by yourself, please contact the Service Centre for repairs.
- Do not let the appliance touch any hot surfaces.
- Do not use the fan in high humidity, temperature, or dusty area.
- Do not insert fingers or other objects into the fan during use.
- Avoid blowing the fan at elderly and children for long periods of time.
- Do not spray detergent such as insecticides into the fan to avoid damages to the material.
- Year 1 – 2 of use: It is recommended to switch off the fan and allow the motor to rest for at least 1 hour after 10 hours of use. After 2 Years of Use: It is recommended to switch off the fan and allow the motor to rest for at least 1 hour after 3 hours of use. For your own safety, please clean your fan regularly. Accumulation of dust/ pet dander etc. may lead to motor fire or pose a fire hazard.

PRODUCT TECHNICAL PARAMETERS

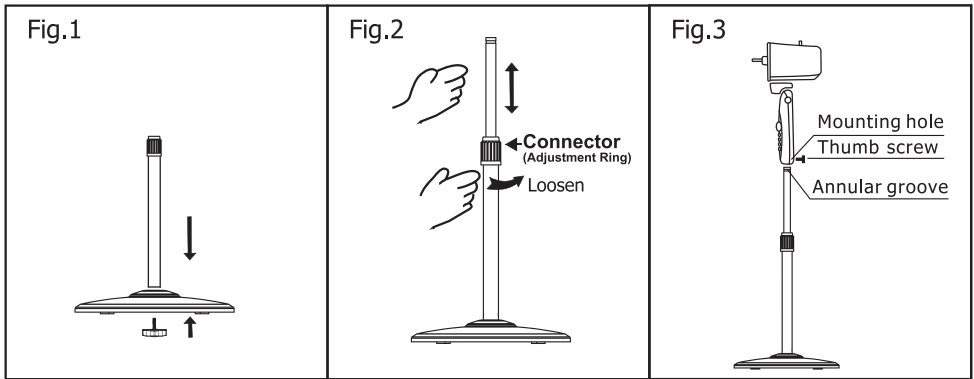
MODEL	RATED VOLTAGE	RATED POWER	AIR VOLUME	MAX AIR FLOW
MSF1637R	220-240V ~ 50Hz	65W	69.3 m ³ /min	7.25 m/s

INTRODUCTION OF PARTS



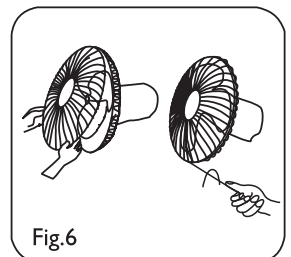
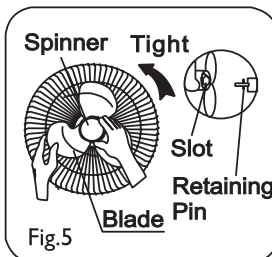
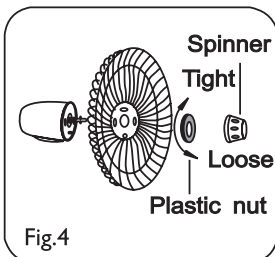
CONTROLS AND OPERATIONS

- Open the gift box and check the parts by referring to the part illustration drawing.
- Insert the standing pole into the base and fasten the plastic nut. (Refer to Fig. 1)
- Loosen the connector and adjust the internal pole to the desired height. (Note: If you can't find the internal pole, it slides inside the standing pole. You can pull it out.) (Refer to Fig. 2)
- Loosen the thumb screw on the back of the fan body and attach it to the internal pole.
- Fasten the thumb screw in alignment with the groove on the internal pole. (See Fig. 3)



Assemble of the blade and guards

- Remove the spinner and the plastic nut from the front side of the motor.
- Fix the rear grille to the motor then tighten the plastic nut again. (Fig.4)
- Discard PVC sleeve on shaft. Insert the blade into shaft, make sure the stopper pin is fitted into groove of the blade. Turn the spinner counter clockwise to tighten the blade. (Fig.5)
- Fix both grilles with plastic rim and then use screwdriver to tighten the locking screw. (Fig.6)



Control Panel:

- ON/OFF KEY

The key is for switching on the fan. The fan will be started at low speed. Press this key again if the fan needs to be switched off.

- SPEED KEY

After the fan has started, press this key to select the fan speed. The sequence is 1, 2 and 3 when this key being touched repeatedly.

- TIMER KEY

This key is touched repeatedly or in press state. The time to be set for air delivery increased step by step of each half an hour and sums to 7.5 hours in 15 steps. Do not press the timer key when the fan will be required to operate continuously. At the moment all timers led won't be on.

- OSC KEY

Press this key for oscillation function. To choose one direction, press this key when the fan is in the desired direction. Otherwise, rotate fan head by hand, the wider oscillation will be realized.

- MODE KEY

Press this key to select mode. The sequence is normal, natural and sleep when this key being touched repeatedly or continuously.

NORMAL WIND

The fan blows continuously from 1 to 3 which SPEED key sets.

NATURAL WIND

The fan blows at the speed of what a computer program imitating the wind of nature sets relating to what the SPEED key sets.

SLEEP WIND

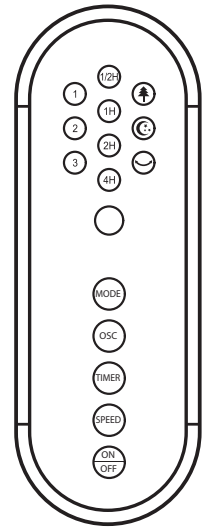
The fan blows at the speed of what a computer program imitating the wind of sleep sets relating to what the SPEED key sets.

1) Medium Sleep Wind

The fan blows at the medium speed of natural wind for about half an hour, then at the low speed of natural wind for remaining time.

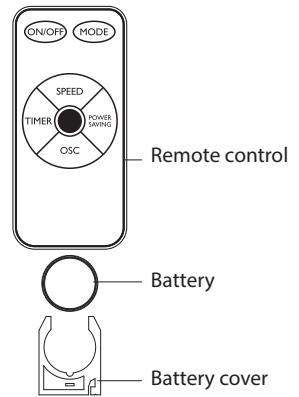
2) Low Sleep Wind

The fan doesn't blow at the low speed of natural wind until timer time is over or the fan is switched off.



REMOTE CONTROL :

- On the remote control, there are five keys.
These five keys may be used as same as of control panel.
- Remote control Operation
 - 1) Point the remote control at the receiver and press the desired key.
 - 2) The remote control will work at distances of up to roughly five meters and the angle of 30 degree from the control panel.
 - 3) Avoid the sunshine irradiating the receiver lest the effect of the receiver should be influenced.
 - 4) The batteries must be removed from the remote control before it is scrapped, and that they are disposed of safely.



• Batteries

- 1) Slide the battery compartment cover.
- 2) Insert the batteries, and make sure that the batteries are placed as shown in the battery compartment diagram.
- 3) Slide back the battery cover.

NOTES: Do not use rechargeable batteries.

TILT ADJUSTING :

- To adjust the air flow upward or downward, push the guards lightly to the desired direction.

HEIGHT ADJUSTING :

- Loosen the extension neck and adjust internal pole to the desired height.

CLEANING AND MAINTENANCE

The fan requires minimal maintenance. Do not try to fix it by yourself.

- Before cleaning and assembling, do not plug the power cord into the socket.
- To ensure that there is adequate air circulation to the motor keep vents at the rear of the motor housing from dust, fluff, etc.
- Do not be used a vacuum cleaner to clean these vents before unplug.
- Do not disassemble the fan to remove fluff.
- Please wipe the exterior parts with a soft cloth which is soaked in mild detergent.
- Do not use any abrasive detergent or solvents to which may scratch the surface.
- Do not use any of followings as cleaning agent: gasoline, thinner, bending.
- Do not allow water or any other liquid into motor housing or interior parts.

Cleaning:

- Be sure to unplug the fan from the electrical supply mains before cleaning.
- Plastic parts should be cleaned with a soft cloth moisten with mild soap. Thoroughly remove soap film with dry cloth.