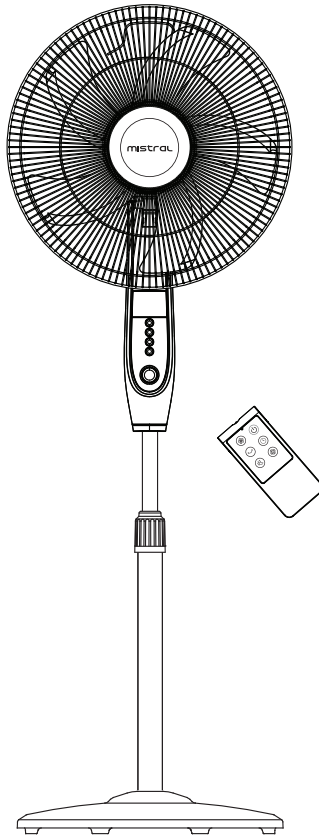


mistral

16" Stand Fan with Remote MSF1679R



STAND FAN

Please read this instruction manual thoroughly before operating and keep it for future reference

IMPORTANT SAFETY INSTRUCTIONS

Warning

- This appliance is not intended for use by persons (including children) with reduced physical, sensory or mental capabilities, or lack of experience and knowledge unless they have been given supervision or instruction concerning the use of the appliance by a person responsible for their safety.
- Children should be supervised to ensure that they do not play with the appliance.
- Do not operate any appliance with a damaged cord or plug or after the appliance malfunctions, or has been dropped or damaged in any manner. If the power cord is damaged, it must be replaced by the Service Centre to avoid a hazard.
- When using electrical appliances, basic safety precautions should always be followed to reduce the risk of fire, electric shock, and/or injury.
- Do not immerse appliance, cord or plug in water or other liquid.
- Unplug from the outlet when not in use and before cleaning.
- Do not unplug the appliance by pulling on the cord.
- Use the accessories from the appliance only, as other accessories not from the appliance may cause fire, electric shock or injury.

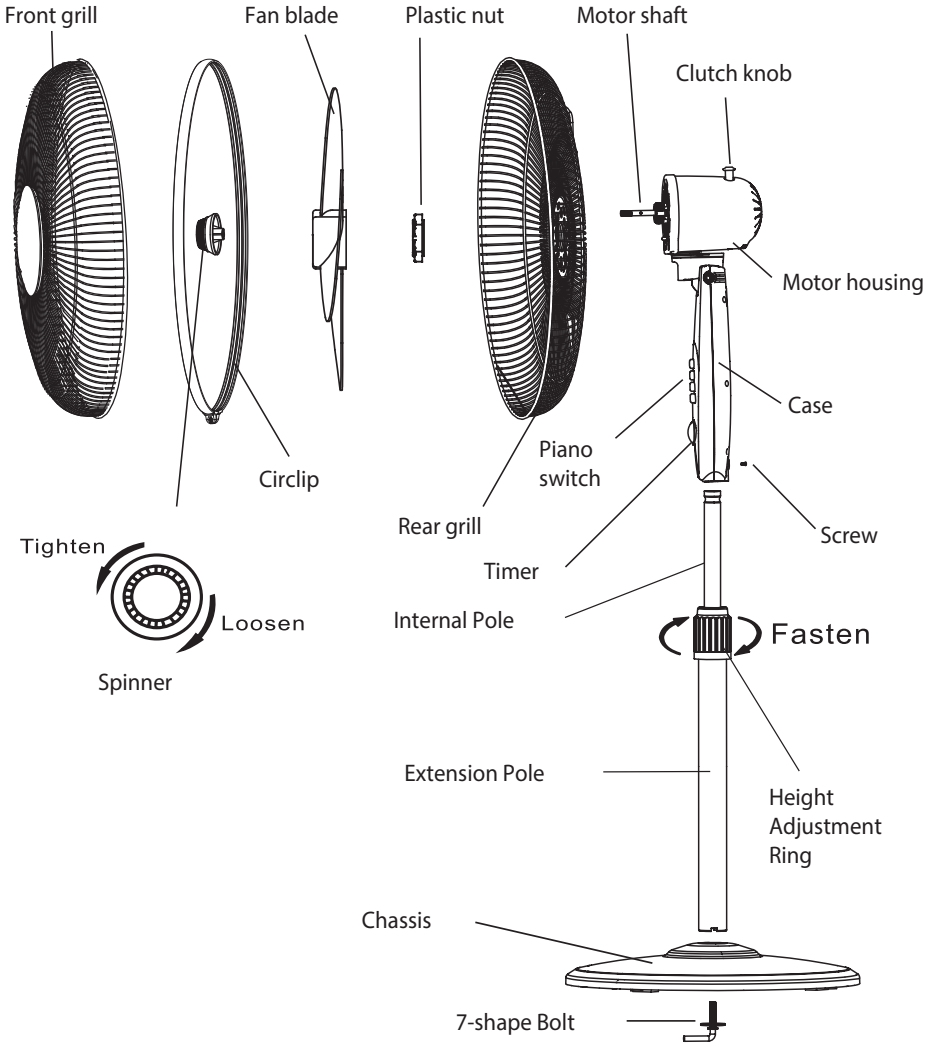
Safety Instructions for Stand Fan

- Year 1 – 2 of use: It is recommended to switch off the fan and allow the motor to rest for at least 1 hour after 10 hours of use.
- After 2 Years of Use: It is recommended to switch off the fan and allow the motor to rest for at least 1 hour after 3 hours of use.
- For your own safety, please clean your fan regularly. Accumulation of dust/ pet dander etc. may lead to motor fire or pose a fire hazard.
- Do not cover the appliance or near flammable or explosive gases to avoid any fire hazard.
- The appliance must stand upright, it should have a distance of 30 cm other objects, or any items would stop the oscillation of the appliance. Make sure there are no curtains, table cloths, clothing, curtains, hair, etc. near the appliance. They could be sucked into the opening of the fan, which can lead to damage or injury.
- Do not insert your fingers, pencils, or any other objects into the appliance.
- Do not use the appliance outdoors, or in any place where it can be splashed with oil, water, or any substances. Do not expose the appliance to direct sunlight.
- Do not use the appliance if it seems to be defective.
- Do not let the appliance touch any hot surfaces.
- Do not use the fan in high humidity, temperature, or dusty area.
- Do not insert fingers or other objects into the fan during use. Avoid blowing the fan at elderly and children for long periods of time.
- Do not spray detergent such as insecticides into the fan to avoid damages to the material.

PRODUCT TECHNICAL PARAMETERS

MODEL	RATED VOLTAGE	RATED POWER
MSF1679R	220-240V~, 50/60Hz	55W

INTRODUCTION OF PARTS



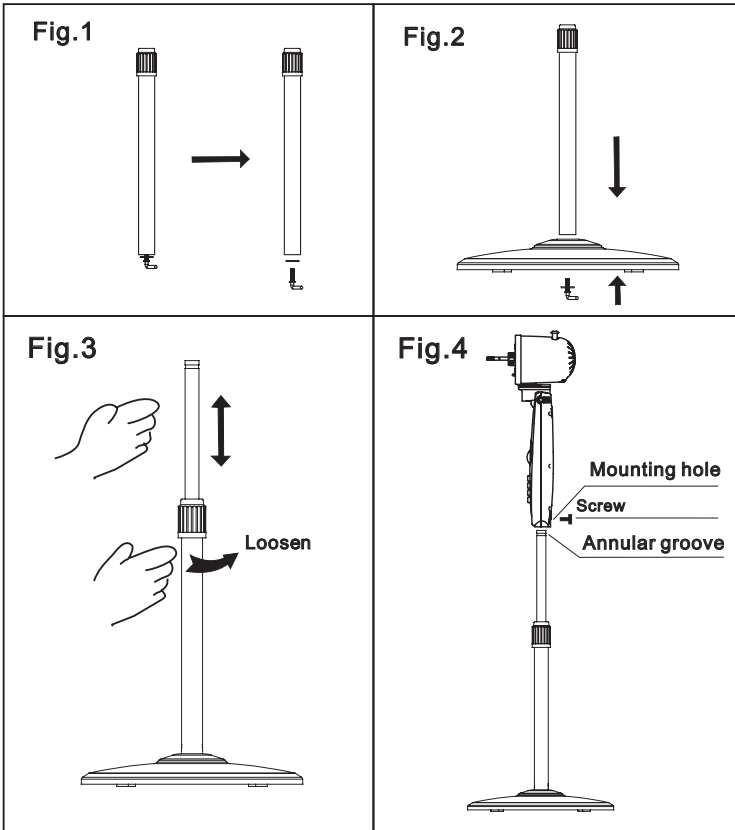
CONTROLS AND OPERATIONS

Assembly

- Unscrew the 7-shape Bolt from the Extension Pole. (Fig.1)
- Insert the extension pole into the chassis and tighten the 7-shape Bolt (Fig.2)
- From the extension pole loosen the height adjustment ring and adjust the internal pole to the desired height. (Note: If you can't find the internal pole, it must inside the extension pole. You can pull it out from the extension pole.) (Fig.3)
- To attach the head unit to the internal pole, loosen the thumb screw on the bottom of the head unit. Place the head unit on the internal pole and tighten the thumb screw in alignment with the groove on the internal pole. (Fig.4)

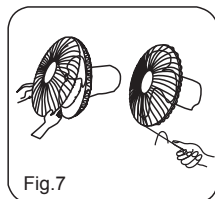
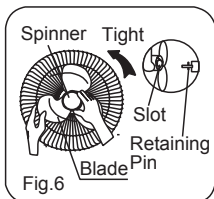
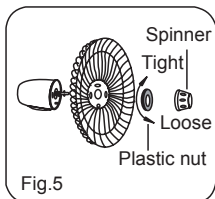
CAUTION:

- Height adjustment ring must be fully fastened before the assembly of the motor section to the internal pole.



Fan Blade Assembly

- Unscrew the spinner clockwise (or take the spinner out from the bag) and the plastic nut counterclockwise to remove both of them. Fix the rear grill to the motor then tighten the plastic nut again. (Fig. 5)
- Insert the blade into shaft, and make sure the rotor shaft pin is fitted into groove of the blade. Turn the spinner counterclockwise to tighten the blade. (Fig. 6)
- Fasten the front grill and the rear grill by the grill clip and then tighten the fan grill locking screw and nut. (Fig. 7)



Remote Control

Power

- This button is for switching on the fan .The fan will be started at breeze step
- Press the button if the fan needs to switch off.

Speed

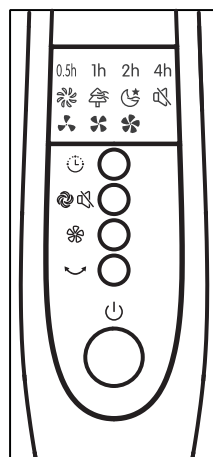
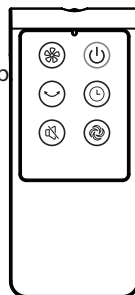
- When the fan started, press this button repeated, the fan will work with "0-1-2-3-4(Off-Breeze-Low-Medium-High)" circulatory.

Timer

- When this button is touched repeatedly or kept in pressed state, the time to be set for air delivery increased step by step of each 0.5 hour and sums to 7.5 hours in 15 steps.
- For instance, if the fan operation is required to be set for 5.5 hours, this button must be touched repeatedly so that the pilot lamps for 0.5, 1 and 4 hours lighten together. It means that the set time is $0.5 + 1 + 4 = 5.5$ hours.
- The time setting indicated by the pilot lamp will decrease gradually by a unit of 0.5 hour.
- Don't press the TIMER key when the fan is required to operate continuously. At the moment all pilot lamps don't light.

Oscillation

- After the fan is started, press this key to oscillate the fan, and stop the oscillation at desired direction by pressing again. By rotating the fan head by hand, you can get wider oscillation angle.



Mode

- Press this key to select mode. The sequence is normal, natural and sleep when this key being touched repeatedly or continuously. The light can indicate mode state.

Normal wind

- Press the mode button to select the normal wind, then press the “speed” repeatedly to choose 3 speed.

Natural wind

- Press the mode button to select the natural wind.
- Natural wind is not adjustable.

Sleep Wind

- Press the mode button to select the sleep wind.
- Sleep wind is not adjustable.

Silent

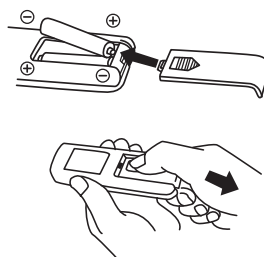
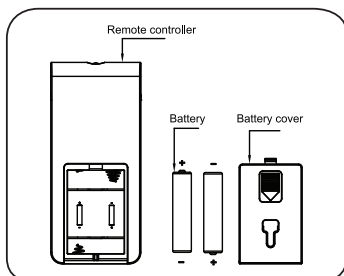
- In the state of non-silence, press silence button, the fan would be in silent state and the silence icon is lightened, while the indicator icons of the other wind types and wind levels would turn off.
- In silent state, press wind type button, blast volume + and – buttons, there would be no response, while other buttons could respond normally.
- Press silence button again to quit and the fan would return to the previous working state.
- The silence icon turns off and 00 is displayed on the digital screen.

Battery

- Battery not included in the packing.
1. Slide the battery compartment Cover.
 2. Insert the batteries, and make sure that the batteries are placed as shown in the Fig.10.
 3. Slide back the battery cover.

Notes:

- Use size “AAA” manganese or alkaline batteries. Do not use rechargeable batteries.



Warning

- Do not dispose of batteries in fire, batteries may explode or leak.
- Do not mix old and new batteries.
- Do not mix alkaline, standard (carbon-zinc) or rechargeable (nickel-cadmium) batteries.

How to use the remote control

- Point the remote controller at the receptor on body of the fan and press the desired button.
- The remote controller will work at distances of up to roughly five meters and the angle of 30 degree included between right and left from the receptor.
- The batteries must be removed from the remote controller before it is scrapped and that they are disposed of safely.

Overheat motor protection

- The windings of the motor have a thermal-fuse that burns out and the fan switches off and temperature of the motor is no longer going up so that plastic parts of the fan don't subject to deformation so far so to be burned by the overheat if the motor is overheat for any unexpected reason.

Control Panel

- These keys of the control panel may be used as same as of the remote controller.

Tilt adjustment

- To adjust the air flow upward or downward, push the grilles lightly to the desired direction.

Height adjustment

- The height of the fan can be adjusted by loosening the height adjustment ring carefully raising or lowering the fan and firmly re-tightening the height adjustment ring.

Power off/ memory

- Fan shutdown or power off, the power is switched on again starts, will be operating in the state of shutdown or power off (not before the timing function of memory).

CLEANING AND MAINTENANCE

The stand fan requires minimal maintenance. Do not try to fix it by yourself.

- Before cleaning and assembling, do not plug the power cord into the socket.
- To ensure that there is adequate air circulation to the motor keep vents at the rear of the motor housing from dust, fluff, etc.
- Do not be used a vacuum cleaner to clean these vents before unplug.
- Do not disassemble the fan to remove fluff.
- Please wipe the exterior parts with a soft cloth which is soaked in mild detergent.
- Do not use any abrasive detergent or solvents to which may scratch the surface.
- Do not use any of followings as cleaning agent: gasoline, thinner, bending.
- Do not allow water or any other liquid into motor housing or interior parts.

Cleaning

- Be sure to unplug the fan from the electrical supply mains before cleaning.
- Plastic parts should be cleaned with a soft cloth moisten with mild soap. Thoroughly remove soap film with dry cloth.